

## Project Case Study: Four Ashes Park, Wolverhampton, UK



**Four Ashes Park is a 52-acre distribution development in central England, under construction until August 2017, and set to offer over 1,000,000 sq ft of floor space.**

Strategically located for country-wide access, the park's first industrial unit has been completed, to be occupied by a leading automotive industry supplier.

The building features three variants of Permaban AlphaJoint which were installed by specialist flooring contractor Malin Floors. 405 lengths of AlphaJoint Classic were chosen, at 175mm height to suit the 190mm slab depth. These were supplied with integral TD8 plate dowels. An additional 20 lengths were supplied with a galvanised rail.

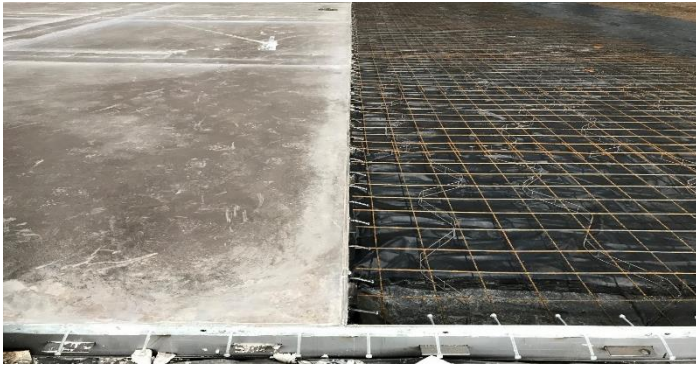
Additionally, the Extended Plate AlphaJoint was supplied, which gave the flexibility to support slightly deeper sections of the slab. This was supplied in galvanised finish and used TD8 dowels to ensure good load transfer between slabs. TD8H dowels (with holes) were used in second and fourth positions.

An experienced installer of Permaban joints, Malin identified some installation issues regarding the length and size of fixings. The Malin team was able to resolve these on site - but thanks to the good relationship and communication we have with this customer, and the work of our technical support team, we have been able to review the fixings to ensure our products are easy as possible for contractors to install in the future.

### Project Key Facts

|                     |   |
|---------------------|---|
| <b>Project type</b> | Warehouse unit  |
| <b>Floor size</b>   | 55,000 m <sup>2</sup>   |
| <b>Location</b>     | Wolverhampton, UK   |
| <b>Products</b>     | AlphaJoint Classic 4010 (quantity 405)<br>AlphaJoint Classic 4010 Galv with TD8 (quantity 20)<br>AlphaJoint Classic Extended Plate 4010 Galv with TD8 and TD8H plate dowels |

|                        |                     |
|------------------------|---------------------|
| <b>Developer</b>       | Bericote            |
| <b>Main Contractor</b> | Readie Construction |
| <b>Flooring</b>        | Malin Floors        |



Permaban is a trading name of RCR Flooring Products Ltd  
Ivybridge, Devon, UK  
Tel: +44 1752 895288 [www.permaban.com](http://www.permaban.com)

Four Ashes Wolverhampton  
05/17