

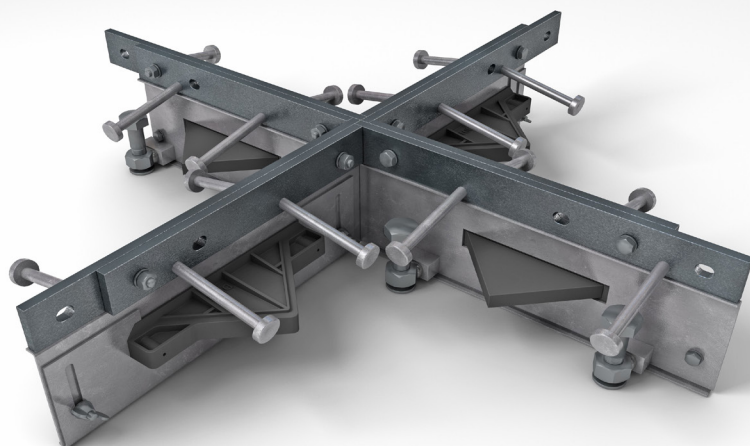
# Alpha® 4010 Accessories

Specification Sheet

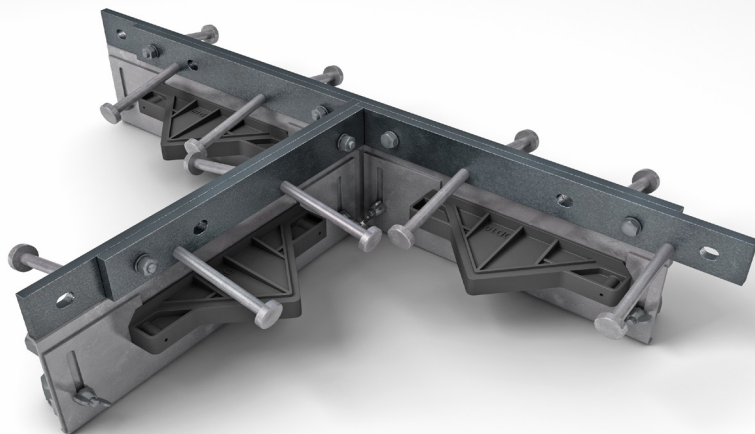
Issue 1.0

03/03/2025

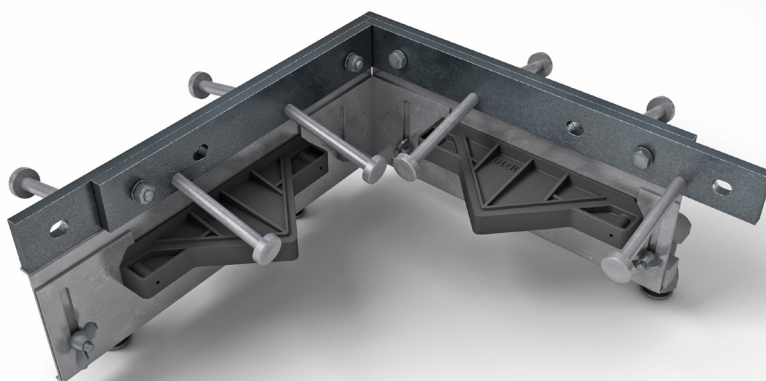
Alpha® 4010 4-Way



Alpha® 4010 T-Section



Alpha® 4010 Dock



# Alpha® 4010 Accessories

Specification Sheet  
Issue 1.0  
03/03/2025

## Alpha® 4010 4-Way

10mm x 100mm shear studs anchor AlphaJoint to concrete

10mm wide cold drawn, square edge steel\* provides joint arris armouring

Sheet steel formwork

Frangible fixing systems

\*\*Universal Extension to suit slab depths 150mm - 200mm

Plate dowel and debond sleeve provides load transfer across joints

\*Also available in electro-galvanised steel and stainless steel  
\*\*Other fixed heights are available

## Alpha® 4010 T-Section

10mm x 100mm shear studs anchor AlphaJoint to concrete

10mm wide cold drawn, square edge steel\* provides joint arris armouring

\*\*Universal Extension to suit slab depths 150mm - 200mm

Frangible fixing systems

Sheet steel formwork

Plate dowel and debond sleeve provides load transfer across joints

\*Also available in electro-galvanised steel and stainless steel  
\*\*Other fixed heights are available

## Alpha® 4010 Dock

10mm x 100mm shear studs anchor AlphaJoint to concrete

10mm wide cold drawn, square edge steel\* provides joint arris armouring

Sheet steel formwork

Frangible fixing systems

\*\*Universal Extension to suit slab depths 150mm - 200mm

Plate dowel and debond sleeve provides load transfer across joints

\*Also available in electro-galvanised steel and stainless steel  
\*\*Other fixed heights are available  
Please note Alpha 4010 Docks are supplied as a pair

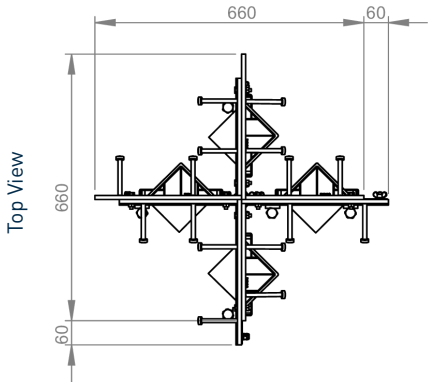
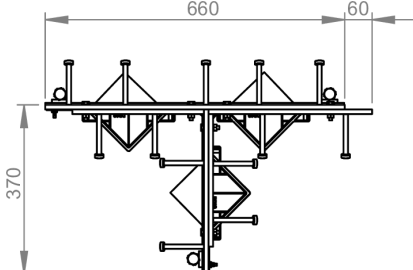
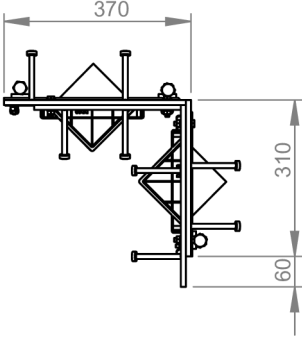
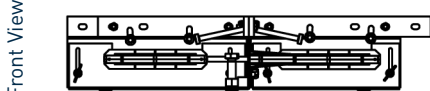
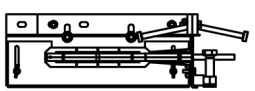
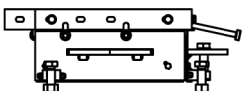
# Alpha® 4010 Accessories

Specification Sheet Issue 1.0  
03/03/2025

## manufacturing tolerances

<b>Length</b>	±2.0mm	<b>Height</b>	±1mm	<b>Straightness</b>	±0.5mm/600mm
---------------	--------	---------------	------	---------------------	--------------

## dimensions and weights of Alpha® 4010 Accessories

	4-Way	T-Section	Dock
<b>Top View</b>			
<b>Front View</b>			

dimensions in mm

## dimensions and weights of Alpha® 4010 Accessories

Accessory	Width (mm)	Length (mm)	Single Weight (kg)	Number Per Bundle	Bundle Weight (kg)
4-Way	720	720	17.7	14	292.8
T-Section	370	720	13.1	28	411.8
Dock	370	370	18.1	14	298.4

Typical height and length values shown only. Weight values shown are based on Alpha® 4010 Universal accessories and are approximate.

## materials

Component	Material
Joint arris armouring (4010)	EN 10277-1:2018 S235JRC
Sheet steel formwork	EN 10130:2006 DC01
Shear stud	EN ISO 13918:2017 S235J2
Plate dowel	EN 10025-2:2004 S275JR
Plate dowel sleeve	HDPP