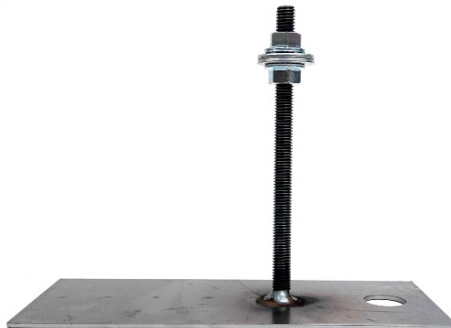


Permaban Installation Methods

Specification Sheet
Issue 1.0
31/03/2025

AlphaFeet Method

Used by contractors who don't pour concrete or use our products daily.
These are an extra cost and are not re-usable. Requires pins and a hole in the dowel.



AlphaFix Method

Used by flooring contractors who pour concrete and use our products daily.
These are an extra cost but are re-usable. Requires pins.



Pin & Weld Method

Used by both specialist flooring contractors and general contractors.
These are an extra cost and are not re-usable. Requires pins.

