

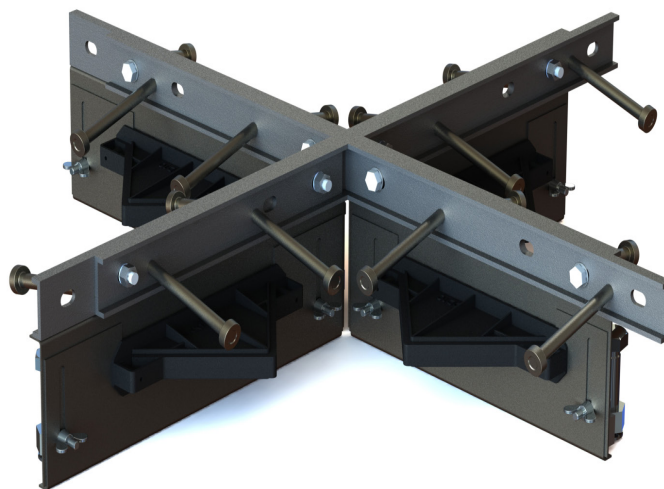
# Alpha® CSS Accessories

Specification Sheet

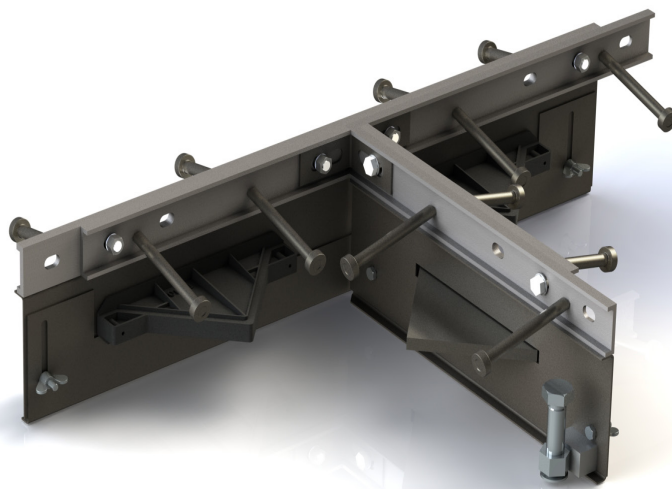
Issue 1.0

22/09/2025

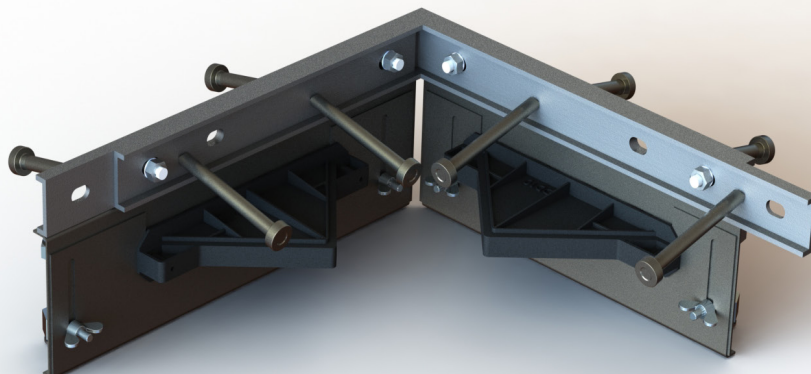
Alpha® CSS 4-Way



Alpha® CSS T-Section



Alpha® CSS Dock



# Alpha® CSS Accessories

Specification Sheet  
Issue 1.0  
22/09/2025

## Alpha® CSS 4-Way

10mm x 100mm shear studs anchor AlphaJoint to concrete

40mm x 10mm C section 304 L stainless steel, provides joint arris armouring

Sheet steel formwork

Frangible fixing systems

Plate dowel and debond sleeve provides load transfer across joints

\*Universal Extension to suit slab depths 150mm - 200mm

\*Other fixed heights are available

## Alpha® CSS T-Section

10mm x 100mm shear studs anchor AlphaJoint to concrete

40mm x 10mm C section 304 L stainless steel, provides joint arris armouring

\*Universal Extension to suit slab depths 150mm - 200mm

Frangible fixing systems

Plate dowel and debond sleeve provides load transfer across joints

Sheet steel formwork

\*Other fixed heights are available

## Alpha® CSS Dock

10mm x 100mm shear studs anchor AlphaJoint to concrete

40mm x 10mm C section 304 L stainless steel, provides joint arris armouring

\*Universal Extension to suit slab depths 150mm - 200mm

Frangible fixing systems

Plate dowel and debond sleeve provides load transfer across joints

Sheet steel formwork

\*Other fixed heights are available  
Please note Alpha CSS Docks are supplied as a pair

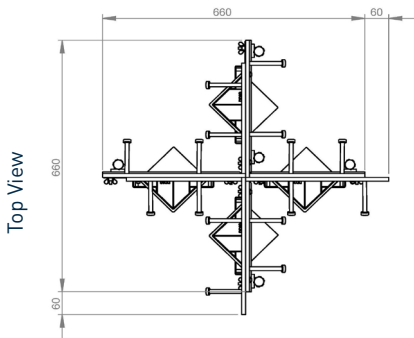
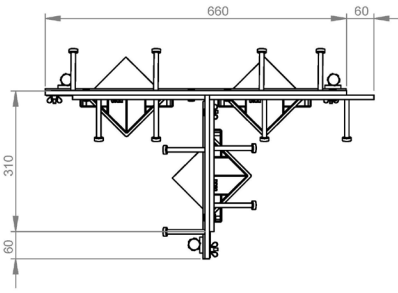
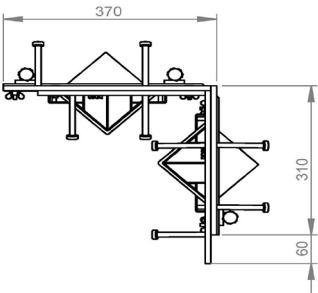
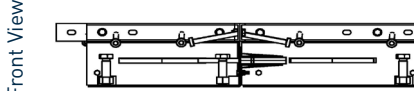
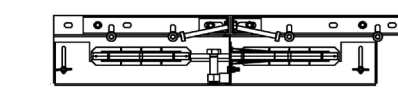
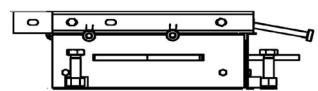
# Alpha® CSS Accessories

Specification Sheet Issue 1.0  
22/09/2025

## manufacturing tolerances

<b>Length</b>	±2.0mm	<b>Height</b>	±1mm	<b>Straightness</b>	±0.5mm/600mm
---------------	--------	---------------	------	---------------------	--------------

## dimensions and weights of Alpha® CSS Accessories

	4-Way	T-Section	Dock
<b>Top View</b>			
<b>Front View</b>			

dimensions in mm

## dimensions and weights of Alpha® CSS Accessories

Accessory	Width (mm)	Length (mm)	Single Weight (kg)	Number Per Bundle	Bundle Weight (kg)
4-Way	720	720	17.7	14	292.8
T-Section	370	720	13.1	28	411.8
Dock	370	370	18.1	14	298.4

Typical height and length values shown only. Weight values shown are based on Alpha® CSS Universal accessories and are approximate.

## materials

Component	Material
Joint arris armouring (CSS)	EN 10088-2 1.4301 304L
Sheet steel formwork	EN 10130:2006 DC01
Shear stud	EN ISO 13918:2017 S235J2
Plate dowel	EN 10025-2:2004 S275JR
Plate dowel sleeve	HDPP