

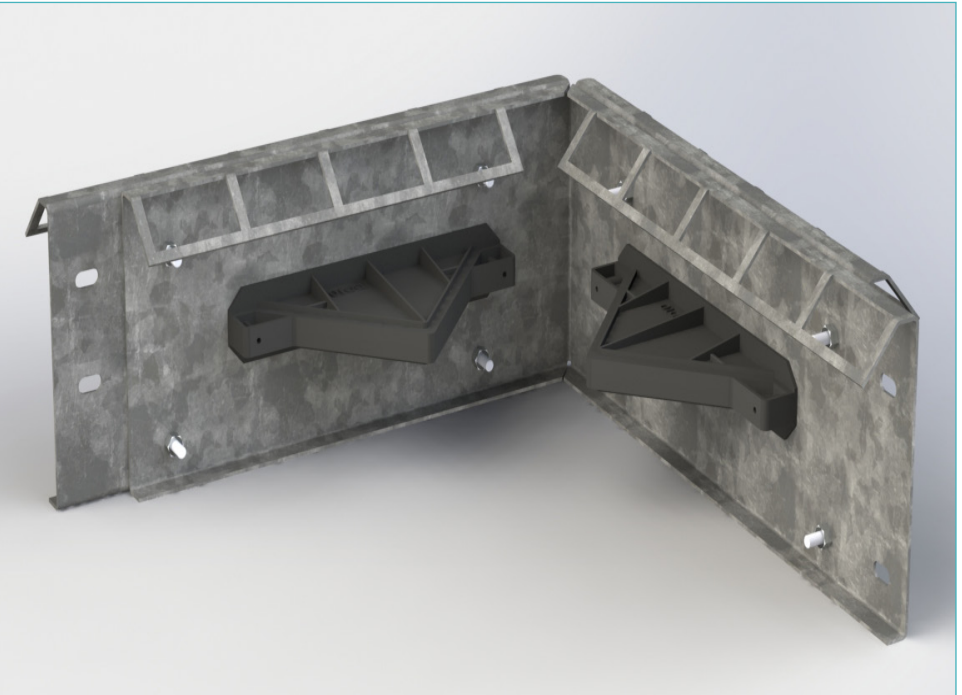
Permaban Eclipse® Dock

Specification Sheet

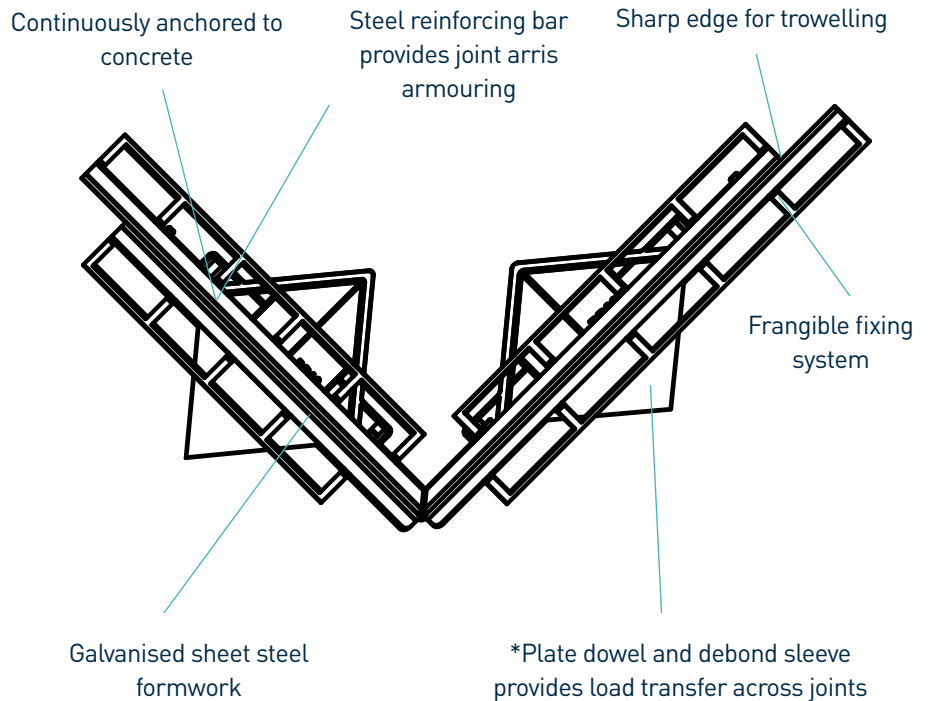
Issue 1.2

11/11/2024

Permaban Eclipse® Dock



Permaban Eclipse® Dock



*Electro-galvanised steel as standard

**Other fixed heights are available

Please note Permaban Eclipse Docks are supplied as a pair

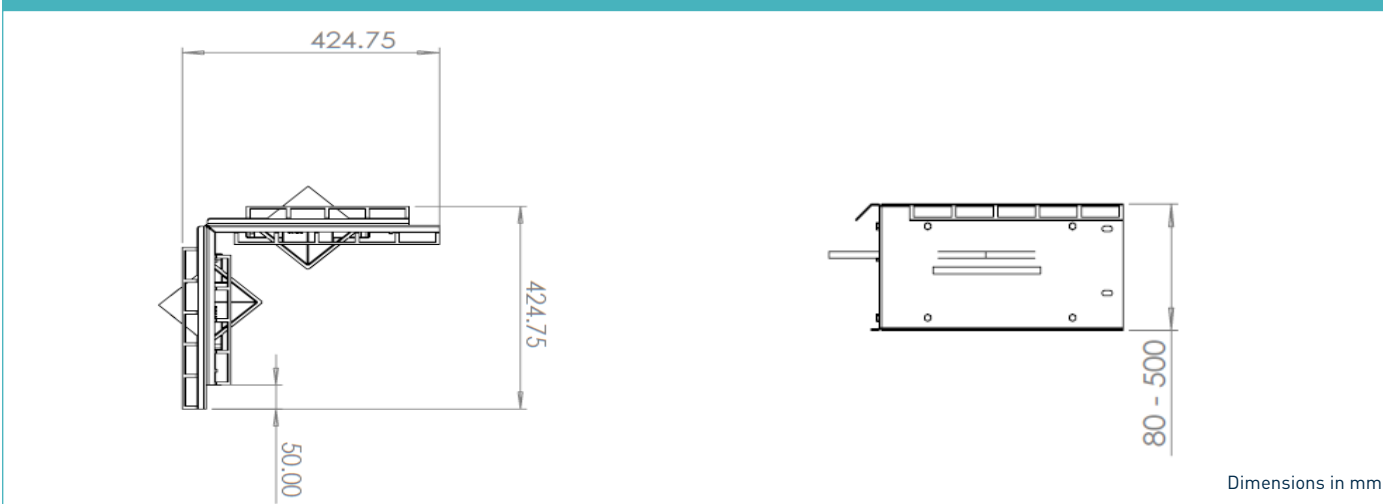
Permaban Eclipse® Dock

Specification Sheet Issue 1.2
 11/11/2024

manufacturing tolerances

Length	±2.0mm	Height	±1mm	Straightness	±0.5mm/600mm
---------------	--------	---------------	------	---------------------	--------------

dimensions of Permaban Eclipse® Dock



dimensions and weight of Permaban Eclipse® Dock

Accessory to suit Eclipse (mm)	Width (mm)	Length (mm)	Single Weight (kg)	Number Per Bundle	Bundle Weight (kg)
Dock 130	424.75	424.75	11.6	14	214.6
Dock 150			12.5	12	197.5
Dock 175			13.6	10	181
Dock 200			14.7	10	192

Typical height and length values shown only. Weight values shown are approximate.

materials

Component	Material
Joint arris armouring	EN 10346:2015 Dx51D+Z & EN 10025-2:2004 S275JR
Plate dowel	EN 10025-2: 2004 S275JR
Plate dowel sleeve	HDPP