

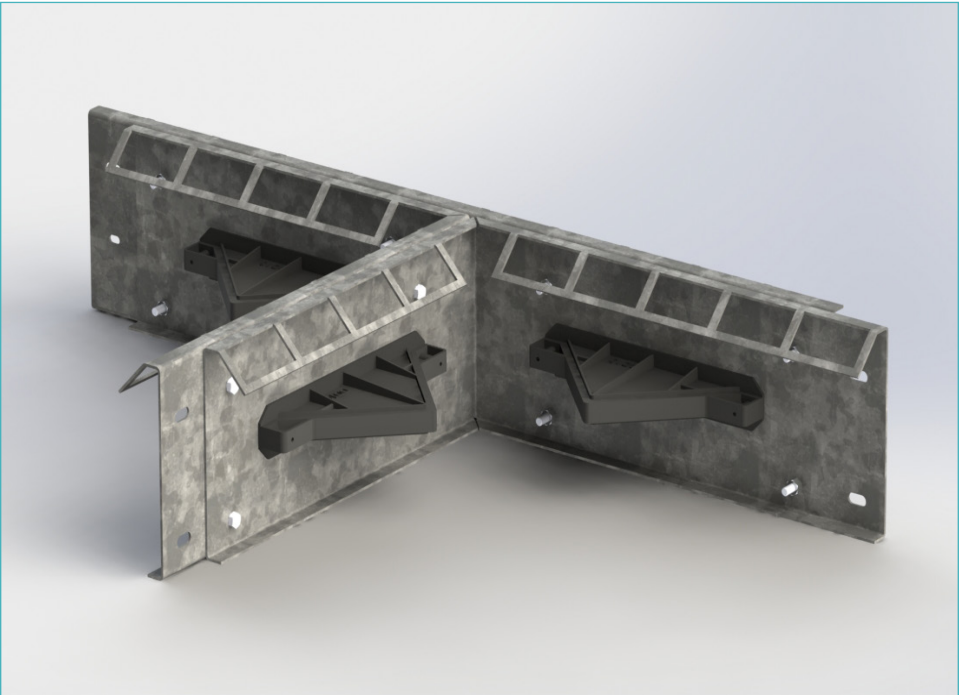
Permaban Eclipse® T-Section

Specification Sheet

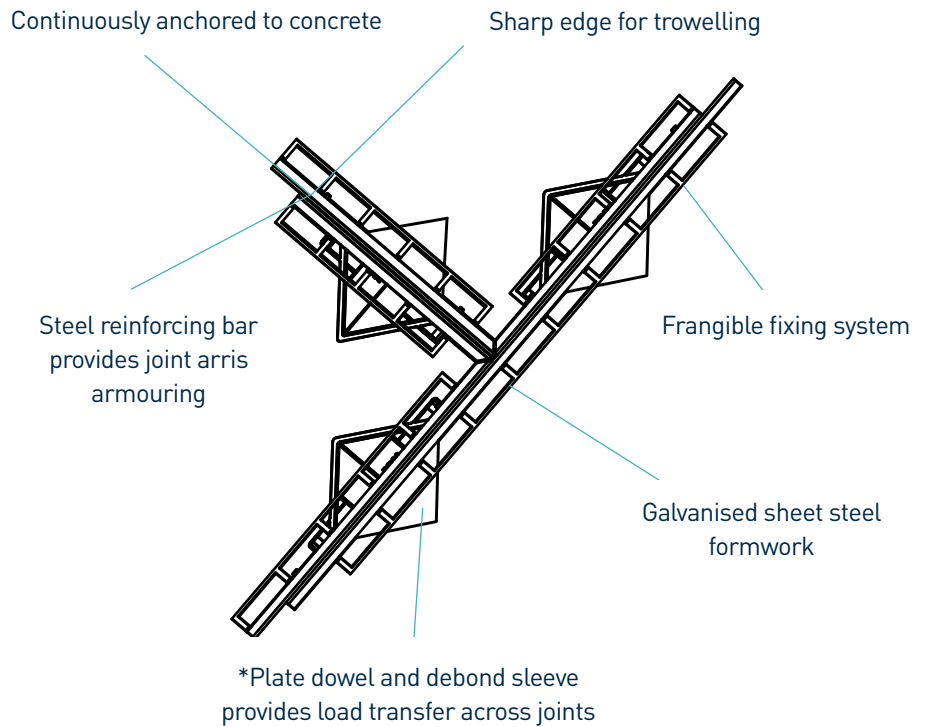
Issue 1.2

11/11/2024

Permaban Eclipse® T-Section



Permaban Eclipse® T-Section



*Electro-galvanised steel as standard
**Other fixed heights are available

Permaban Eclipse® T-Section

Specification Sheet Issue 1.2
11/11/2024

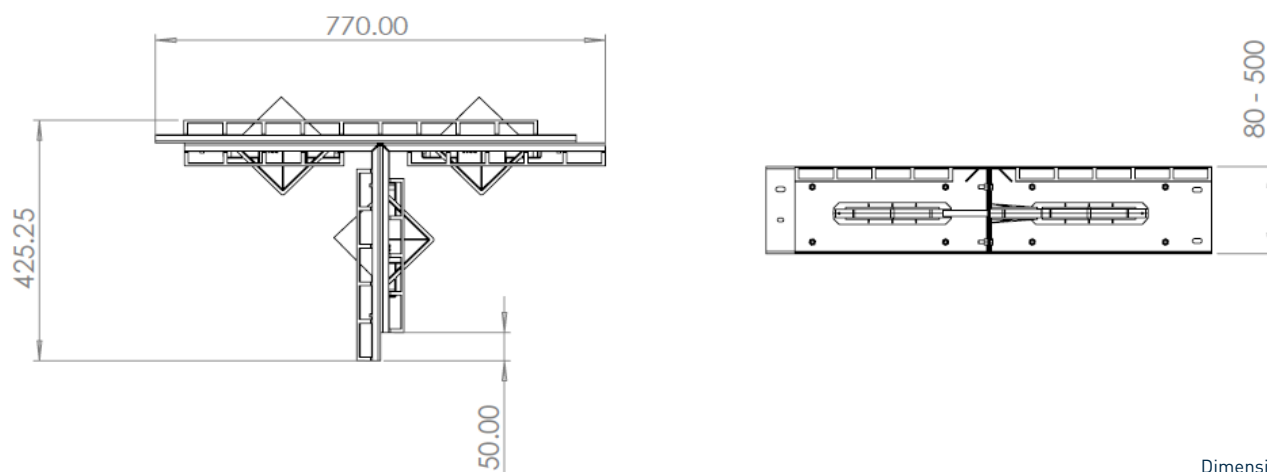
manufacturing tolerances

Length ±2.0mm

Height ±1mm

Straightness ±0.5mm/600mm

dimensions of Permaban Eclipse® T-Section



Dimensions in mm

dimensions and weight of Permaban Eclipse® T-Section

Accessory to suit Eclipse (mm)	Width (mm)	Length (mm)	Single Weight (kg)	Number Per Bundle	Bundle Weight (kg)
T-Section 130	425.25	770	10.1	28	332.6
T-Section 150			10.7	24	304.8
T-Section 175			11.5	20	275
T-Section 200			12.4	20	292.4

Typical height and length values shown only. Weight values shown are approximate.

materials

Component	Material
Joint arris armouring	EN 10346:2015 Dx51D+Z & EN 10025-2:2004 S275JR
Plate dowel	EN 10025-2: 2004 S275JR
Plate dowel sleeve	HDPP