

Permaban AlphaJoint CSS Installation Guide

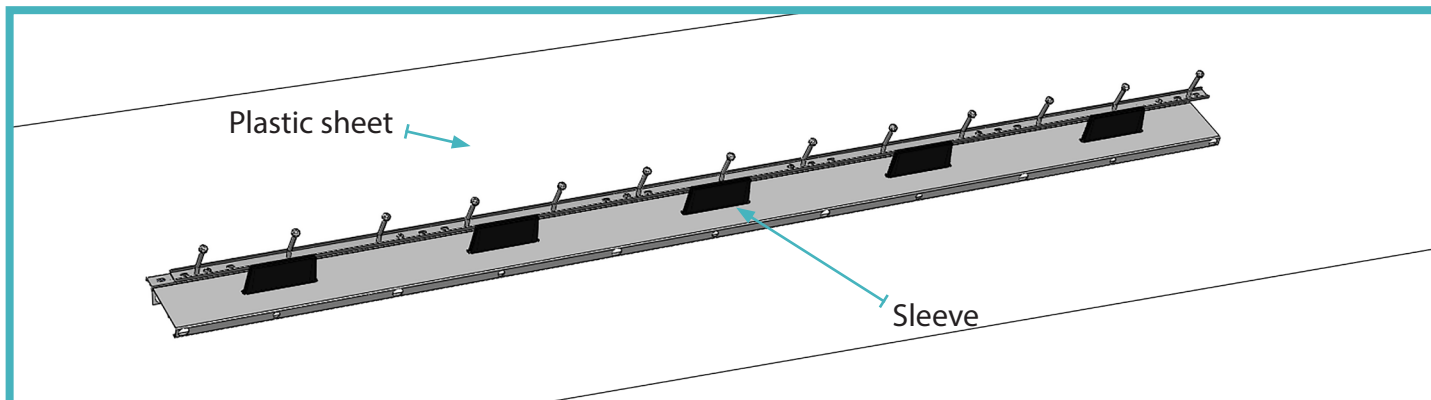
Using Pin & Weld Method

Installation Guide Issue V1.0

14/07/22

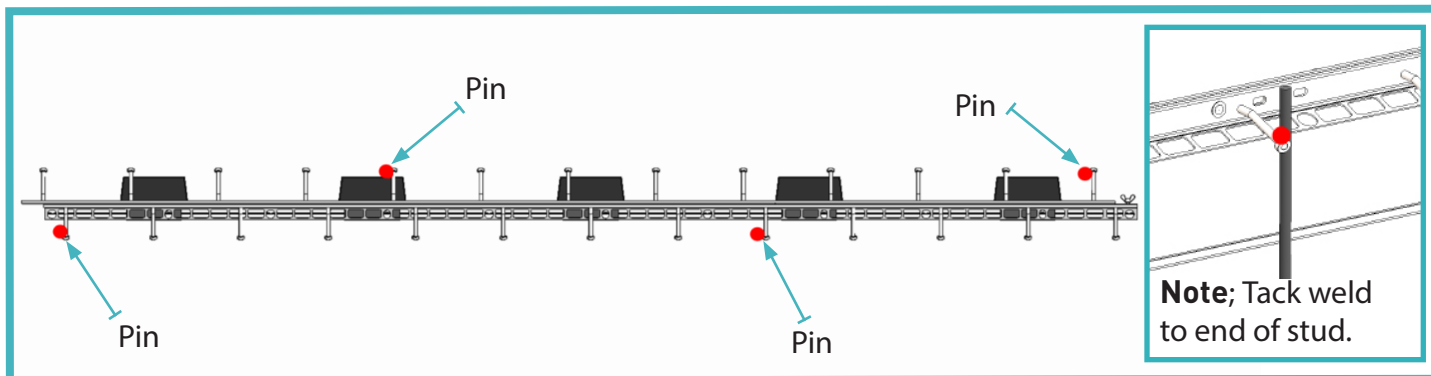
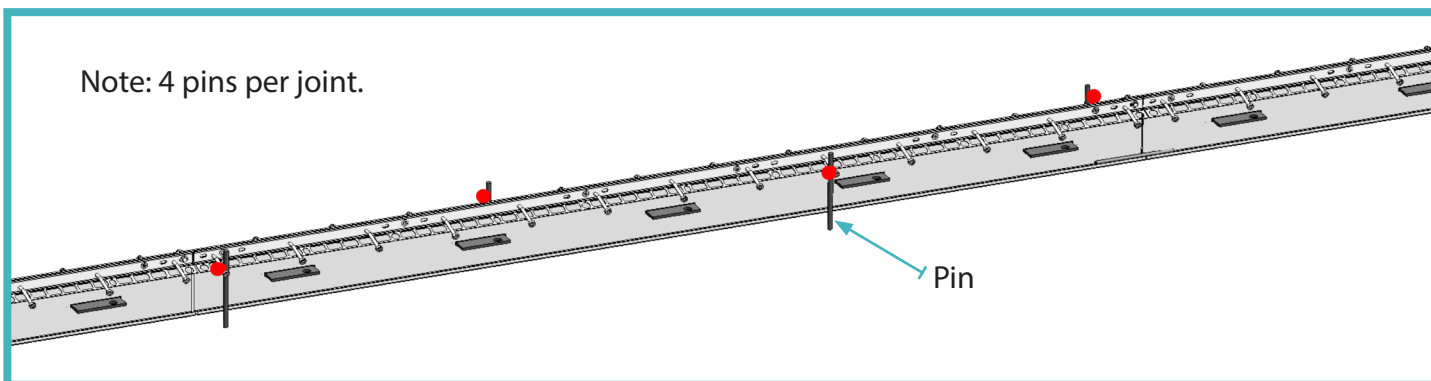
01 Placing the AlphaJoint

Place joints on the floor with sleeves pointing up.



02 Place pins

Pins are situated towards the end of the stud, then tack welded in place. The tack weld will break under the pressure of the concrete, this will allow the joint to open along the length of the stud with the pin still in place.



Note; Tack weld to end of stud.

Top strip

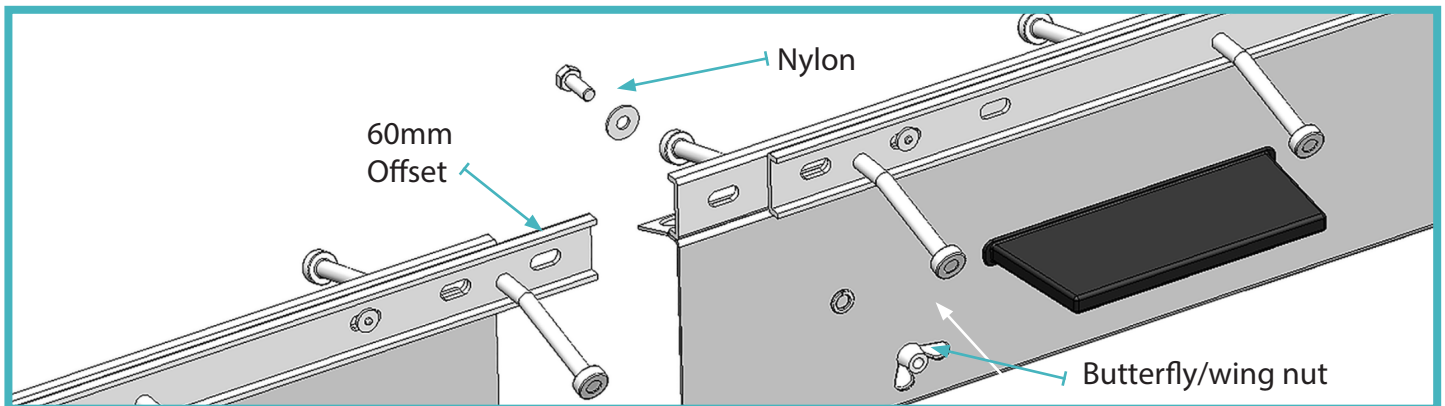
Permaban AlphaJoint Installation Guide

Using Pin & Weld Method

Installation Guide Issue V1.0
14/07/22

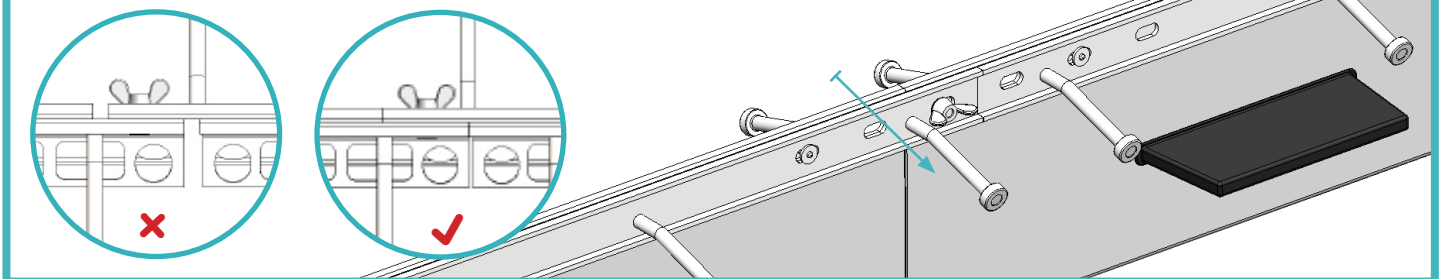
03 Fix joints together

Position joints end to end, unscrew the wing nut and nylon, push the 60mm offsets together and re-assemble the nylon and wing nut. Note; The CSS top strip may move laterally during transit and require minor realignment during installation.



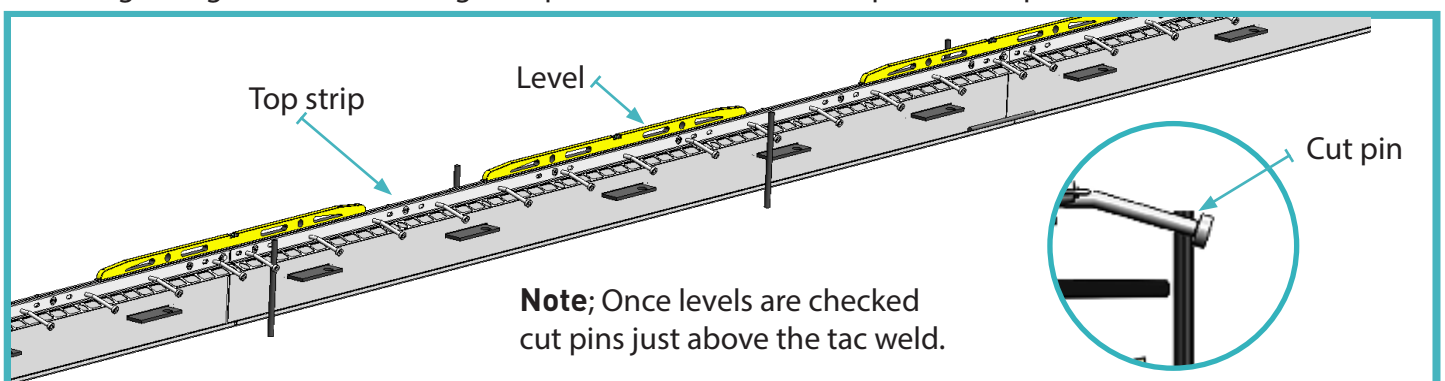
Joints must be flush with one another.

Butterfly/Wing nut must sit horizontal to top strip.



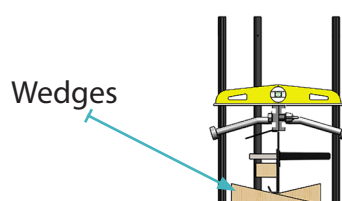
04 Adjust to Height

Use wedges to get the desired height required and check with a spirit level/optical level.



Measure the vertical and horizontal level using the top strip.

Note; Joints must be fixed at 90°.



Use wedges to adjust the vertical and the horizontal.

Note; Check the joint is level in the 3 positions above.

Permaban AlphaJoint Installation Guide

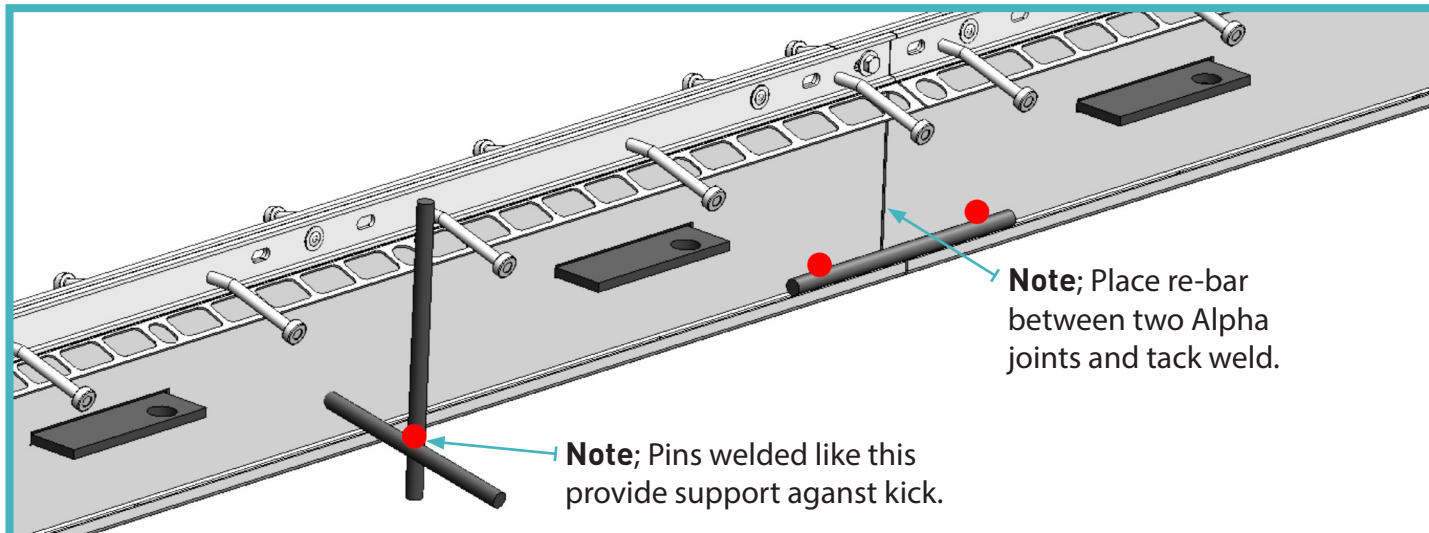
Using Pin & Weld Method

Installation Guide Issue V1.0

14/07/22

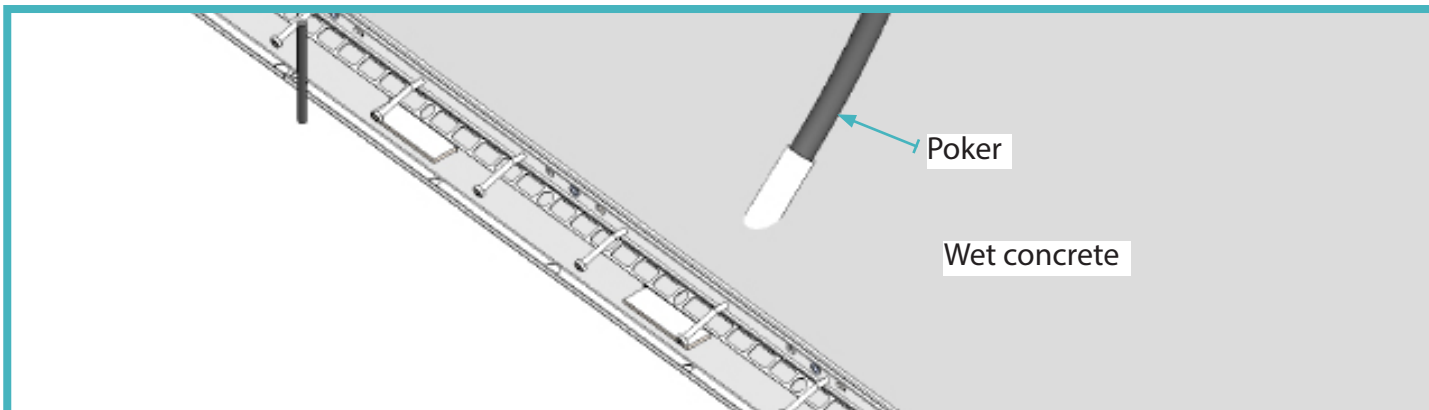
05 Support bars

This method gives good support to the Joint and helps to prevent kick.



06 Vibrate Concrete

Poker vibrate along length of the joint to compacted concrete.



07 Finish

Finish concrete, flush to top of the armoured joint ensuring the rail is clearly viable.