

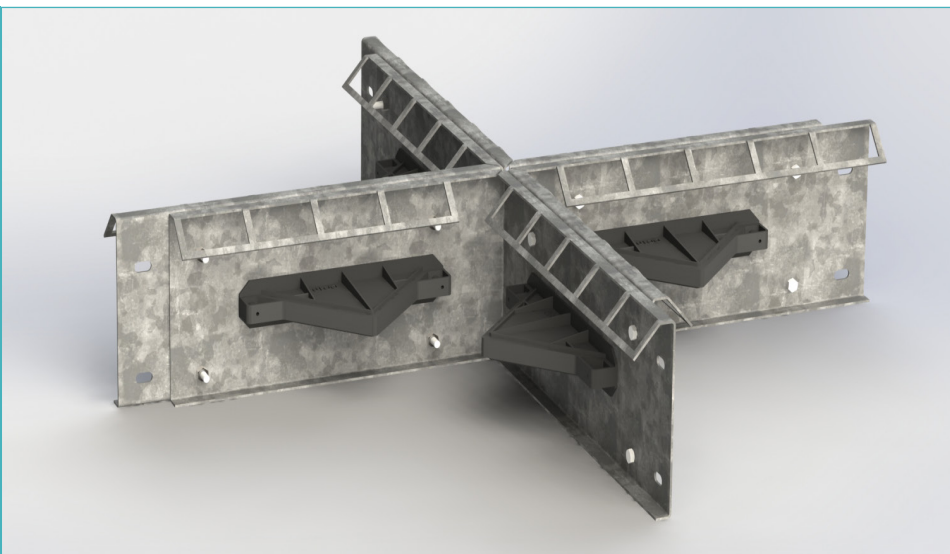
Permaban Eclipse® Accessories

Specification Sheet

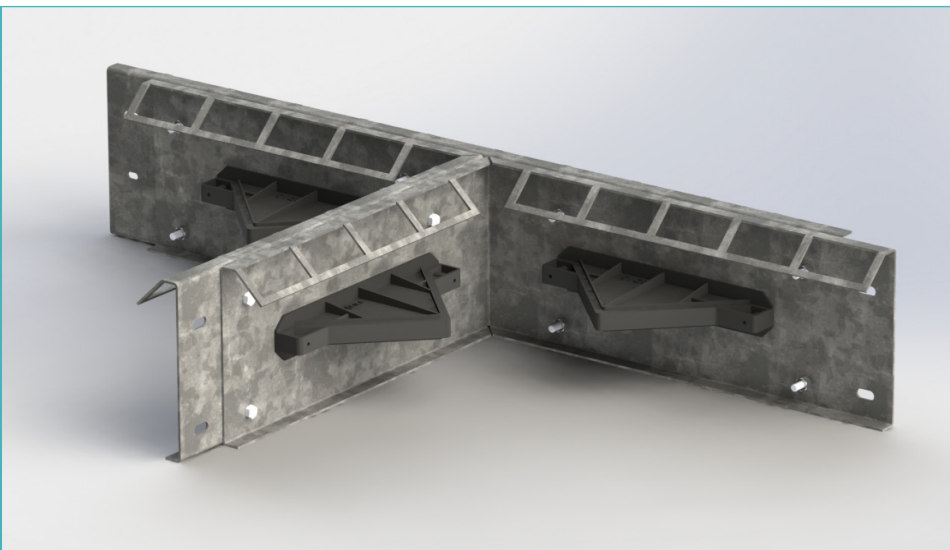
Issue 1.0

03/03/2025

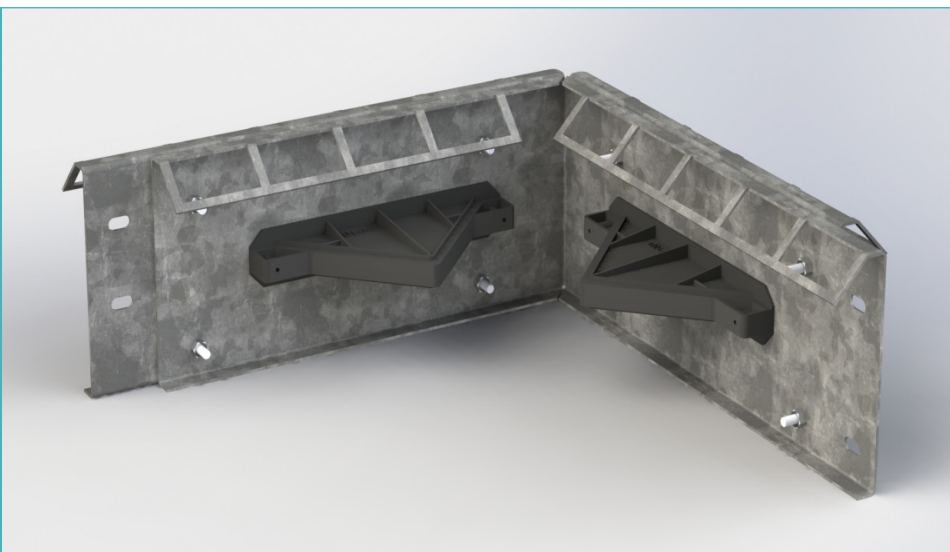
Permaban Eclipse® 4-Way



Permaban Eclipse® T-Section



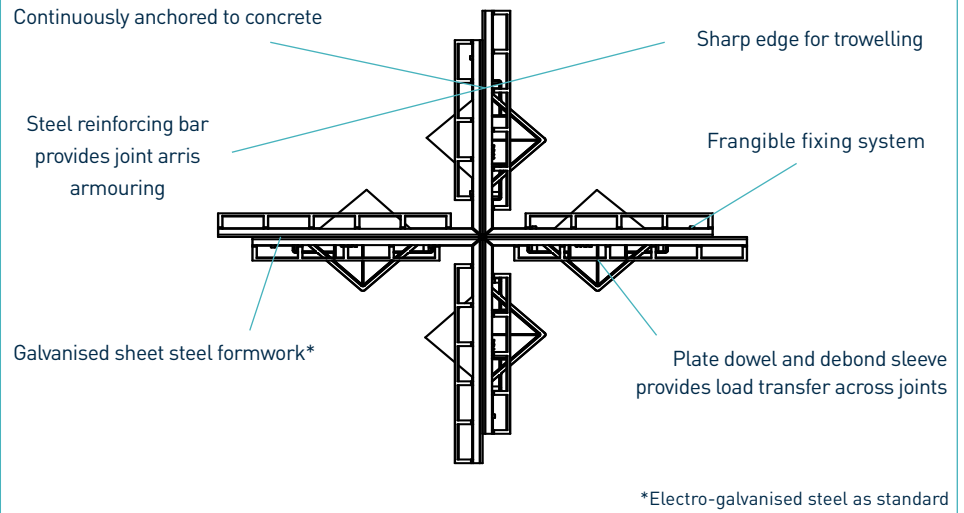
Permaban Eclipse® Dock



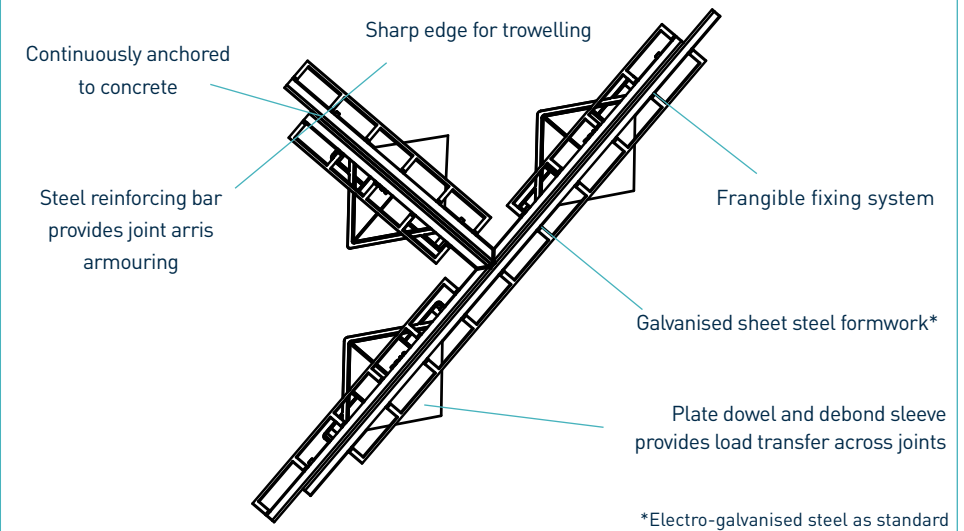
Permaban Eclipse® Accessories

Specification Sheet
Issue 1.0
03/03/2025

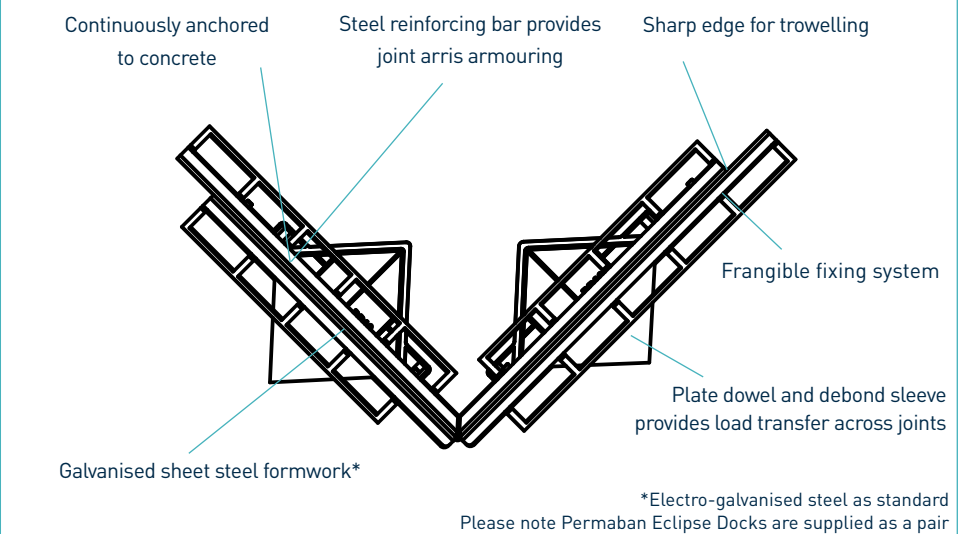
Permaban Eclipse® 4-Way



Permaban Eclipse® T-Section



Permaban Eclipse® Dock



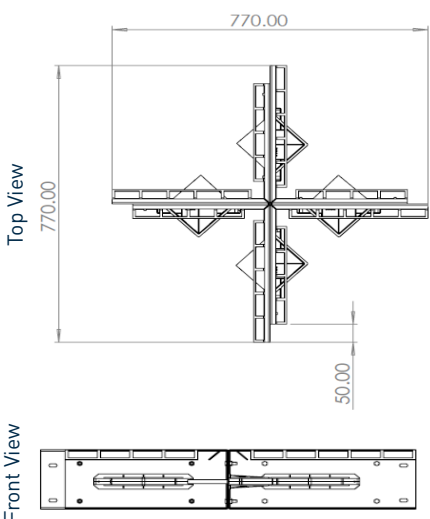
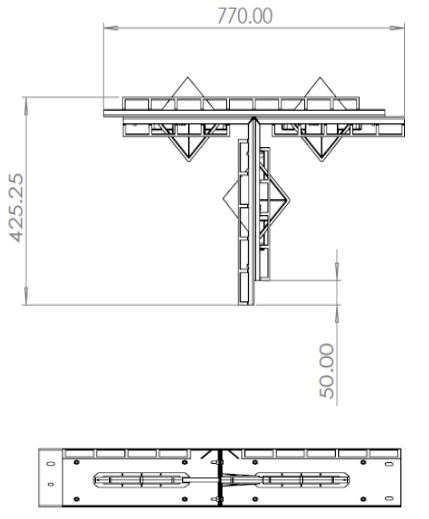
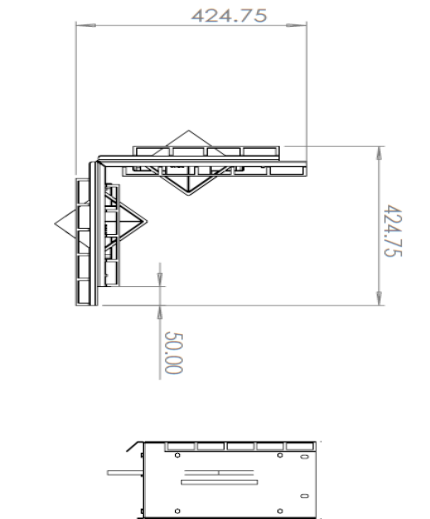
Permaban Eclipse® Accessories

Specification Sheet Issue 1.0
03/03/2025

manufacturing tolerances

Length	±2.0mm	Height	±1mm	Straightness	±0.5mm/600mm
---------------	--------	---------------	------	---------------------	--------------

dimensions and weights of Permaban Eclipse® Accessories

4-Way	T-Section	Dock
		

dimensions in mm

dimensions and weights of Permaban Eclipse® Accessories

Accessory	Width (mm)	Length (mm)	Single Weight (kg)	Number Per Bundle	Bundle Weight (kg)
4-Way	770	770	16.8	10	213
T-Section	425.25	770	11.5	20	275
Dock	424.75	424.75	13.6	10	181

Typical height and length values shown only. Weight values shown are based on Permaban Eclipse® 175 mm accessories and are approximate.

materials

Component	Material
Joint arris armouring	EN 10346:2015 Dx51D+Z & EN 10025-2:2004 S275JR
Plate dowel	EN 10025-2: 2004 S275JR
Plate dowel sleeve	HDPP