

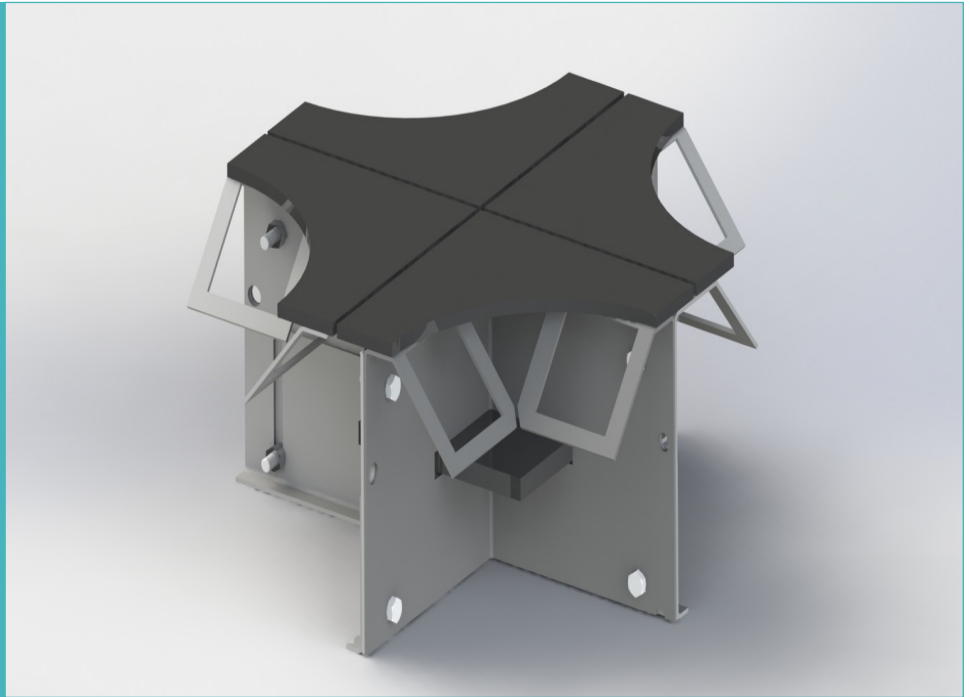
# Permaban Wave® 4-Way

Specification Sheet

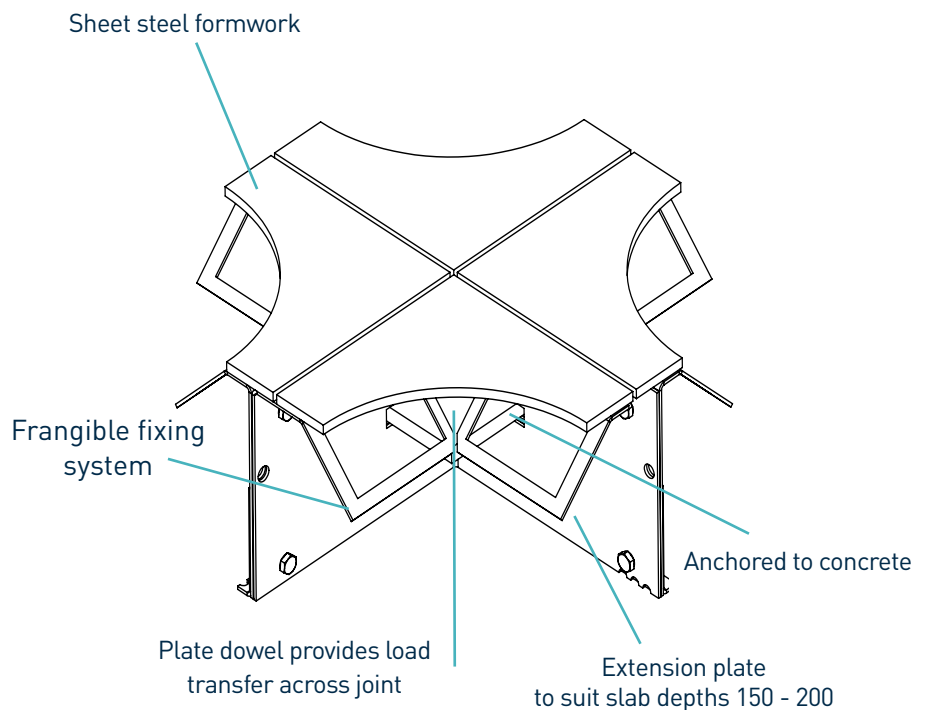
Issue 1.5

01/08/2023

## Permaban Wave® 4-Way



## Permaban Wave® 4-Way



\* Also available in electro-galvanised steel and stainless steel

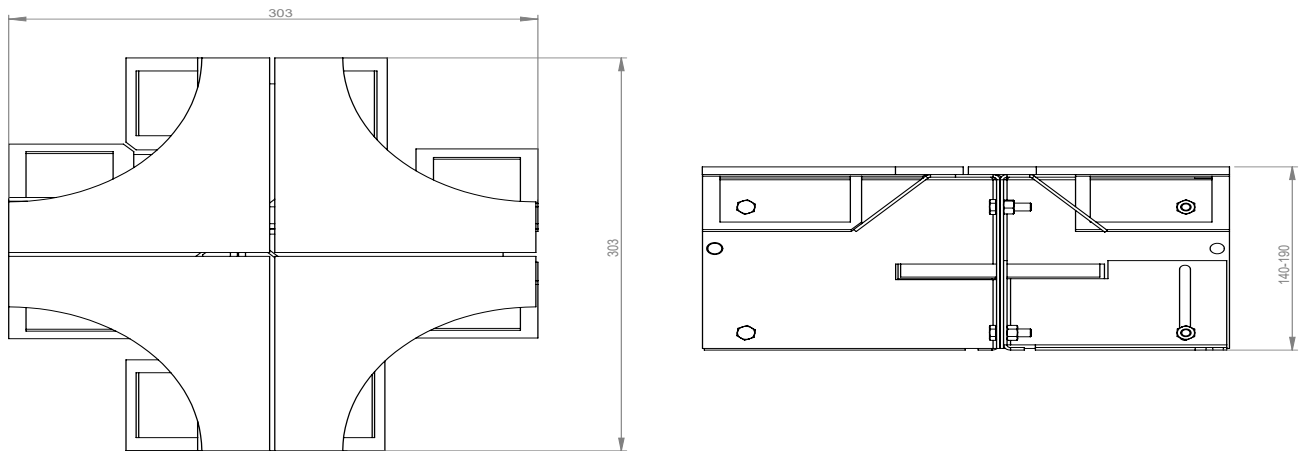
# Permaban Wave® 4-Way

Specification Sheet Issue 1.5  
01/08/2023

## manufacturing tolerances

<b>Length</b>	±2.0mm	<b>Height</b>	±1mm	<b>Straightness</b>	±0.5mm/600mm
---------------	--------	---------------	------	---------------------	--------------

## dimensions of Permaban Wave® 4-Way



## dimensions and weight of Permaban Wave® 4-Way

Accessory	Width (mm)	Length (mm)	Single Weight (kg)	Number Per Bundle	Bundle Weight (kg)
4-Way	303	303	6	48	323

Typical height and length values shown only.

## materials

Component	Material
Non impact steel top provides joint arris	EN 10277-1:2018 S235JRC
Sheet steel formwork	EN 10130:2006 DC01
Plate dowel	BS EN 10025-2:2004 S275JR
Plate dowel sleeve	HDPP