

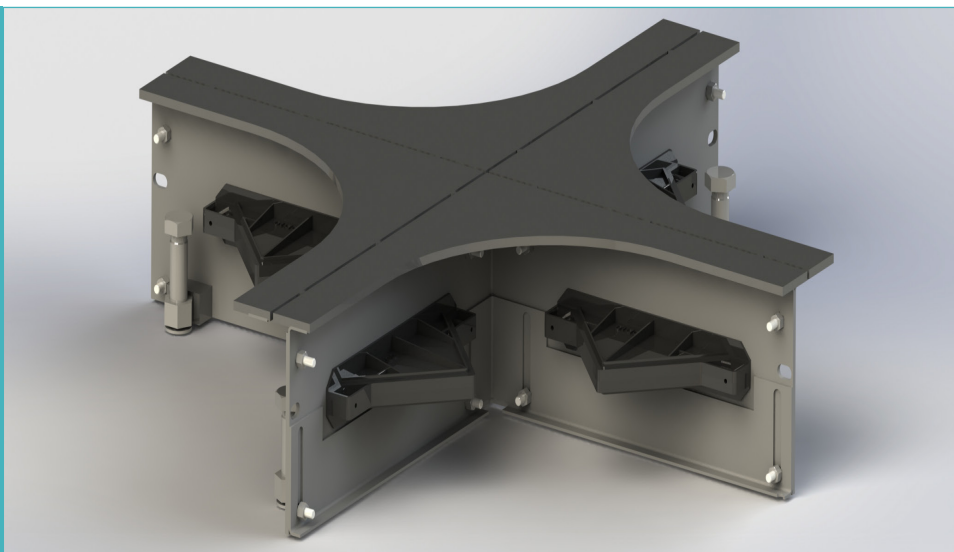
Permaban Wave® Accessories

Specification Sheet

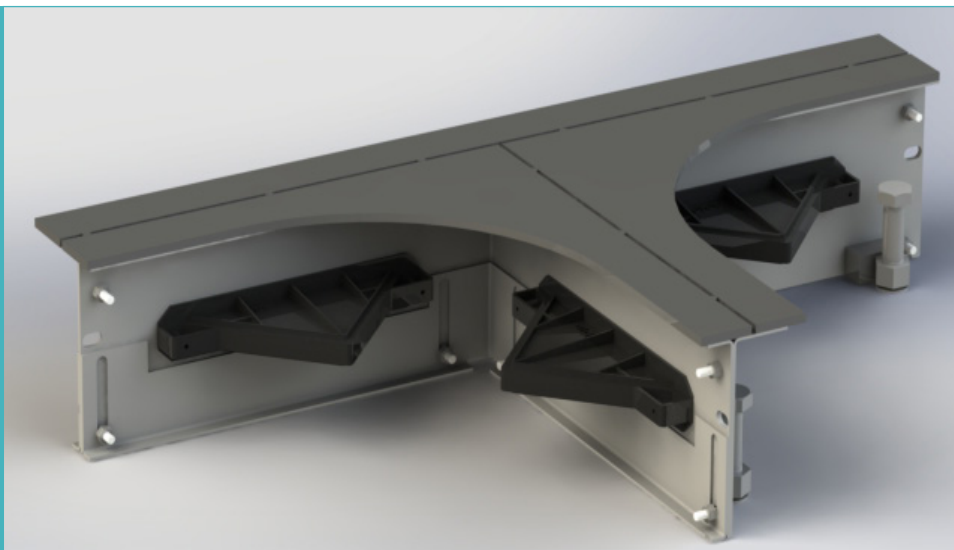
Issue 1.0

03/03/2025

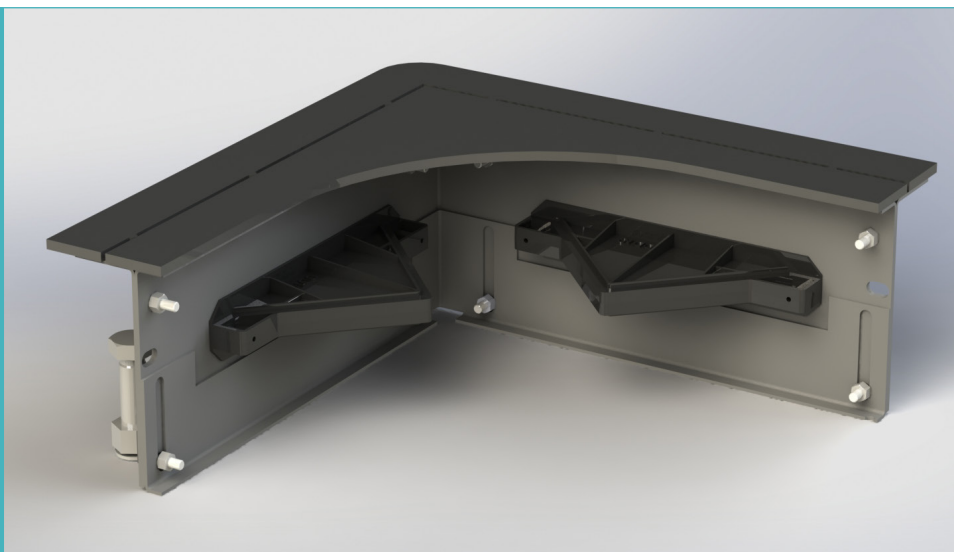
Permaban Wave® 4-Way



Permaban Wave® T-Section



Permaban Wave® Dock



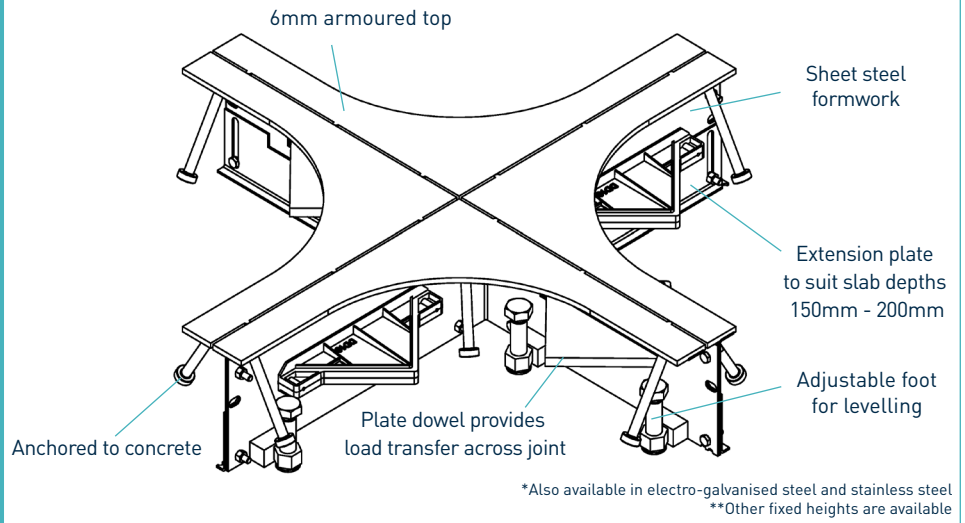
Permaban Wave® Accessories

Specification Sheet

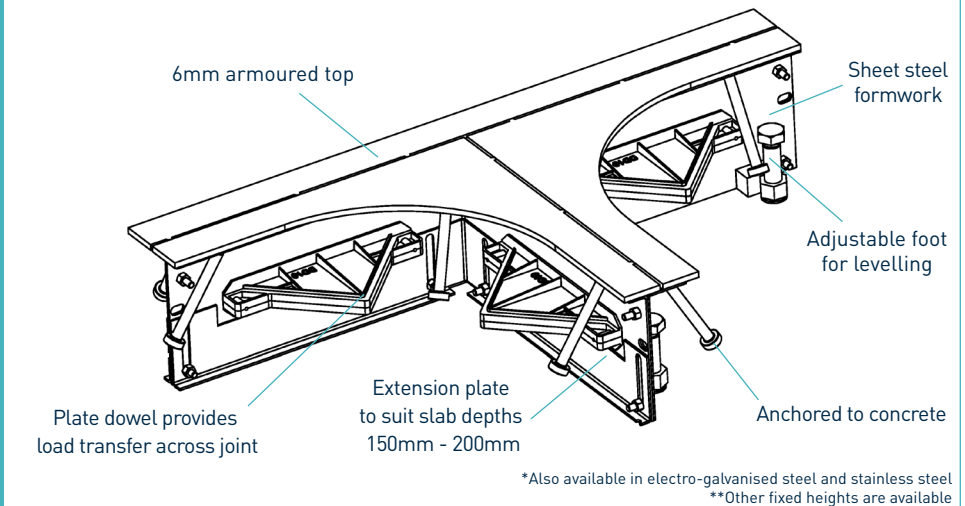
Issue 1.0

03/03/2025

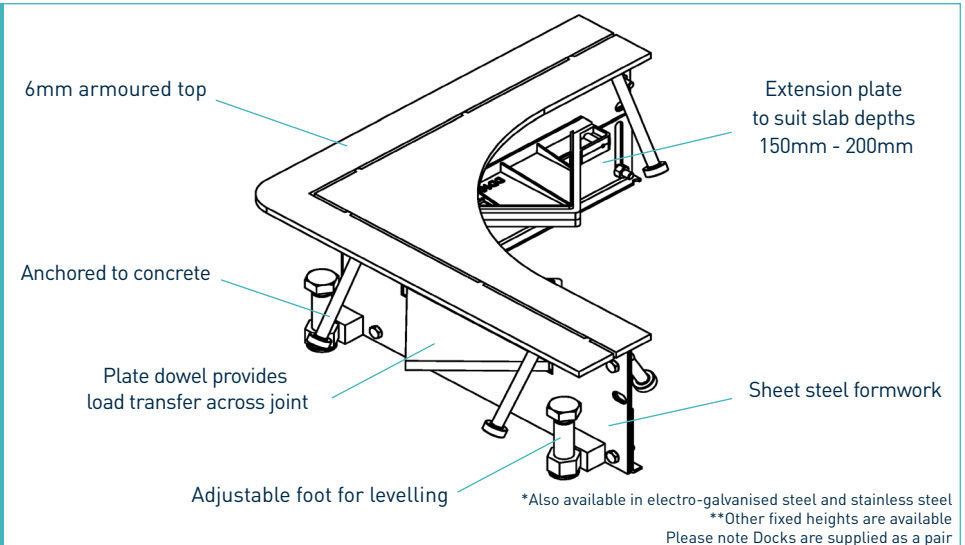
Permaban Wave® 4-Way



Permaban Wave® T-Section



Permaban Wave® Dock



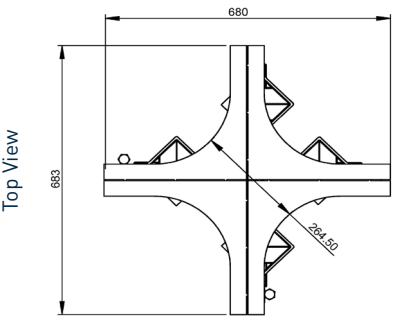
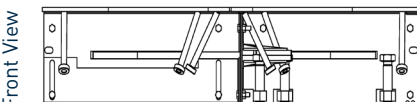
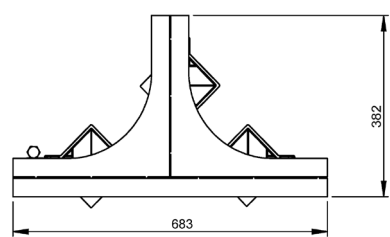
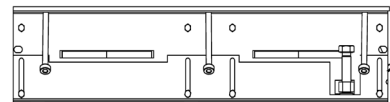
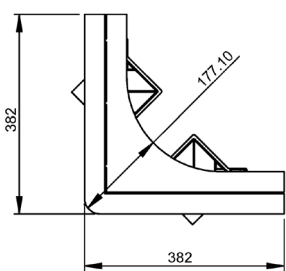
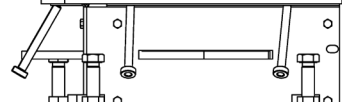
Permaban Wave® Accessories

Specification Sheet Issue 1.0
03/03/2025

manufacturing tolerances

Length	±2.0mm	Height	±1mm	Straightness	±0.5mm/600mm
---------------	--------	---------------	------	---------------------	--------------

dimensions and weights of Permaban Wave® Accessories

4-Way	T-Section	Dock
 	 	 

dimensions in mm

dimensions and weights of Permaban Wave® Accessories

Accessory	Width (mm)	Length (mm)	Single Weight (kg)	Number Per Bundle	Bundle Weight (kg)
4-Way	680	683	14.5	14	248
T-Section	683	382	21	28	633
Dock	382	382	10	14	185

Typical height and length values shown only. Weight values shown are based on Permaban Wave® Universal accessories and are approximate.

materials

Component	Material
Non impact steel top provides joint arris	EN 10277-1:2018 S235JRC
Sheet steel formwork	BS EN 1030:2006 DC01
Plate dowel	BS EN 10025-2:2004 S275JRG2
Plate dowel sleeve	HDPP