

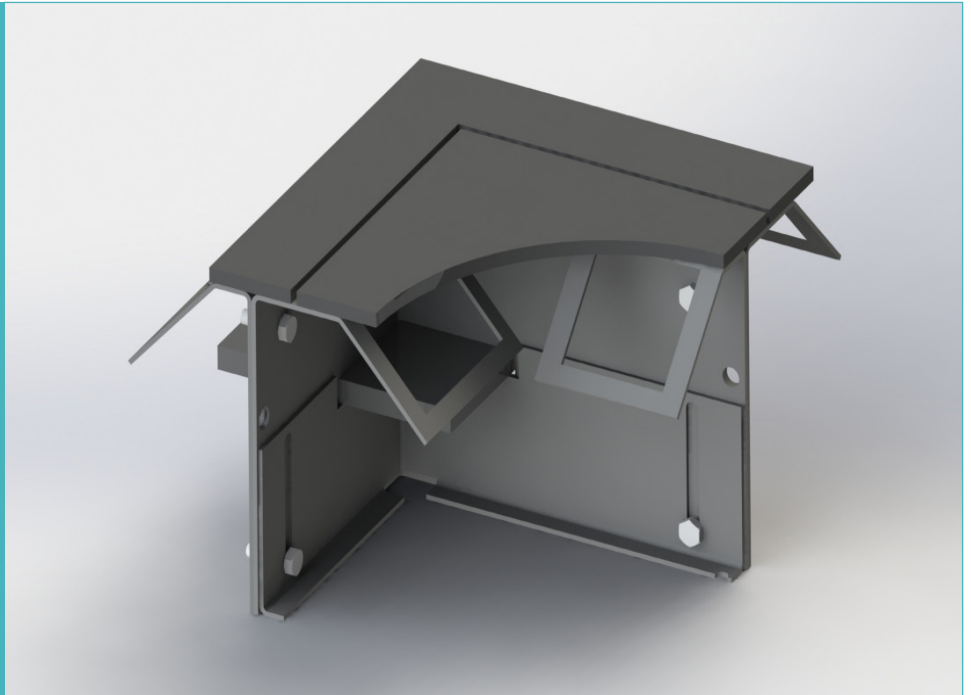
Permaban Wave® Dock

Specification Sheet

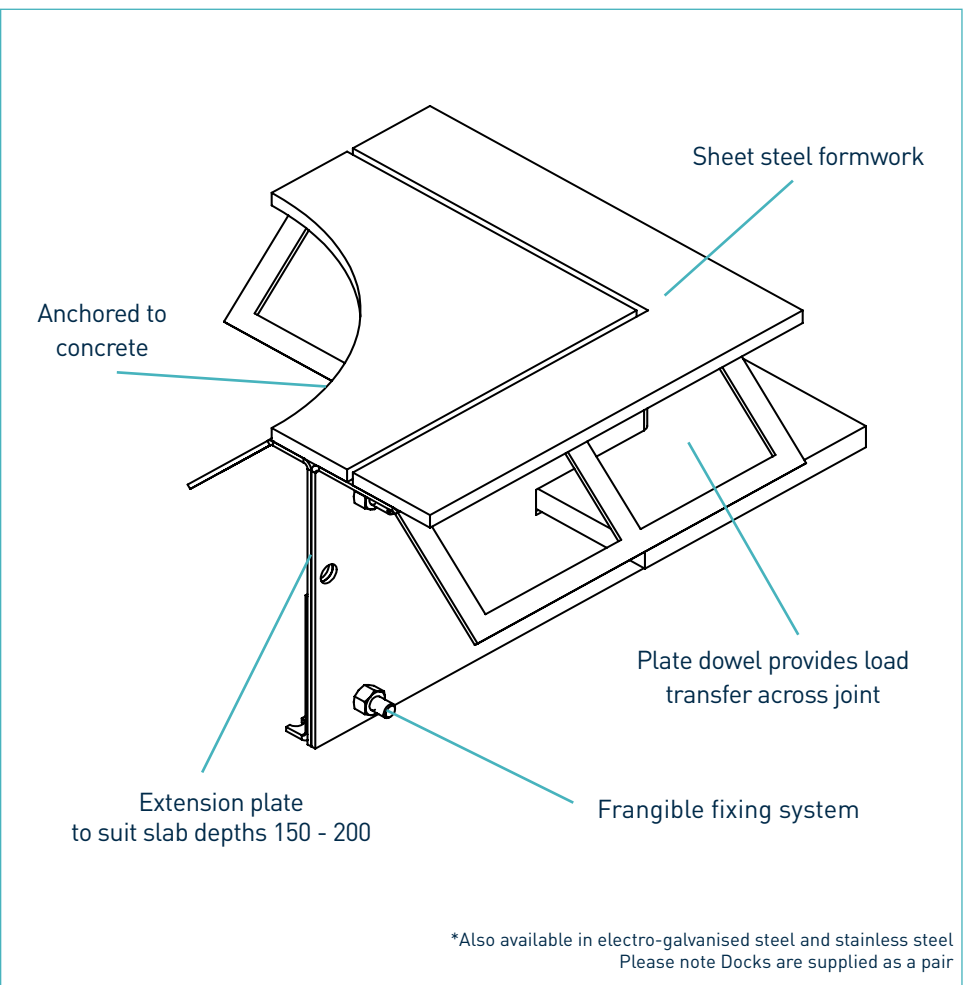
Issue 1.5

01/08/2023

Permaban Wave® Dock



Permaban Wave® Dock



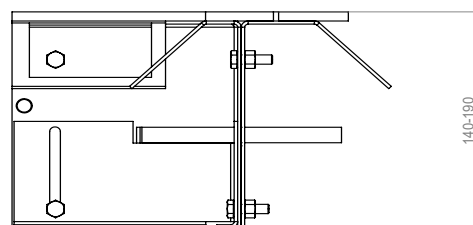
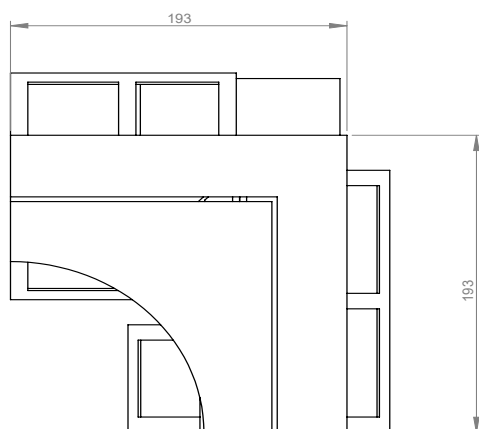
Permaban Wave® Dock

Specification Sheet Issue 1.5
01/08/2023

manufacturing tolerances

Length	±2.0mm	Height	±1mm	Straightness	±0.5mm/600mm
---------------	--------	---------------	------	---------------------	--------------

dimensions of Permaban Wave® Dock



dimensions and weight of Permaban Wave® Dock

Accessory	Width (mm)	Length (mm)	Single Weight (kg)	Number Per Bundle	Bundle Weight (kg)
Dock (pair)	193	193	7	24	203

Typical height and length values shown only.

materials

Component	Material
Non impact steel top provides joint arris	EN 10277-1:2018 S235JRC
Sheet steel formwork	EN 10130:2006 DC01
Plate dowel	BS EN 10025-2:2004 S275JR
Plate dowel sleeve	HDPP