

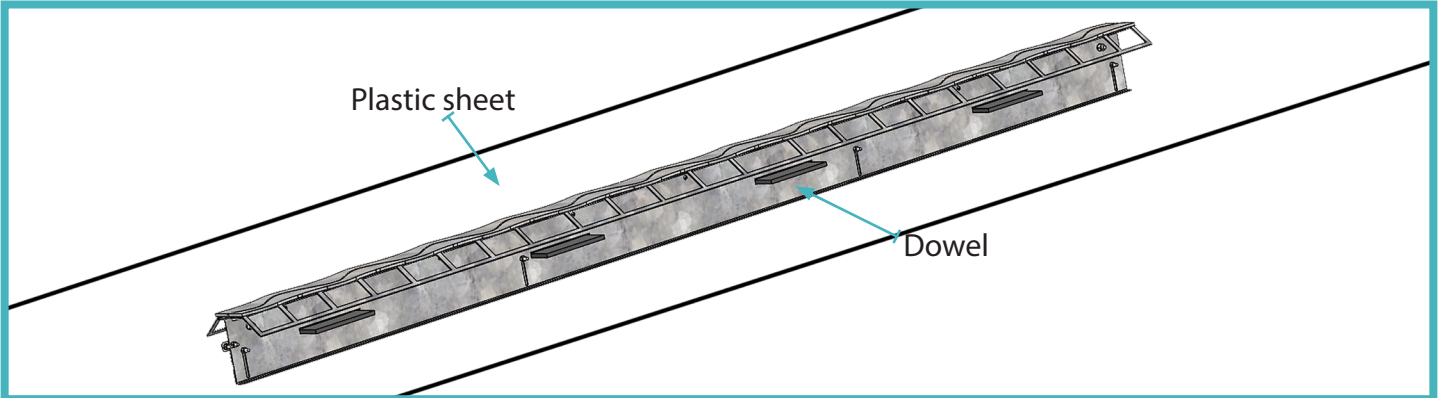
Permaban Wave Installation Guide

Using AlphaFeet Method

Installation Guide Issue V2.0
02/09/24

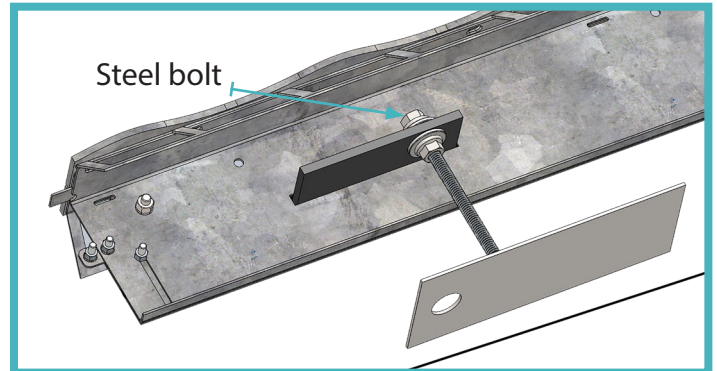
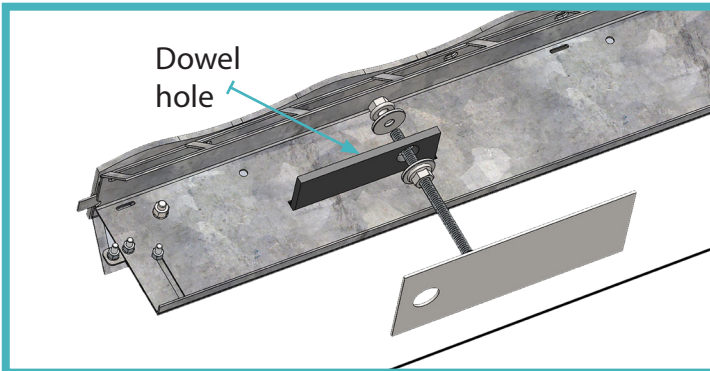
01 Placing the Wave Joint

Place joints on the floor with dowels pointing down.

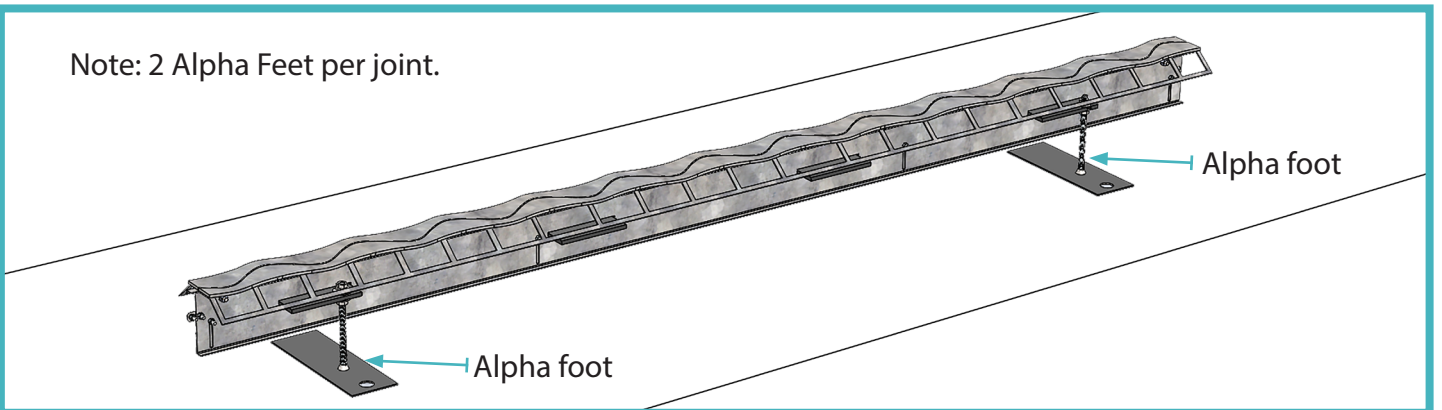


02 Insert 2 AlphaFeet per Joint

Slightly tilt Joint and insert AlphaFoot through the hole of the dowel, then assemble the flat washers and nuts to secure in place.



Once nylon bolt is secure, pull Joint towards you and stand upright.

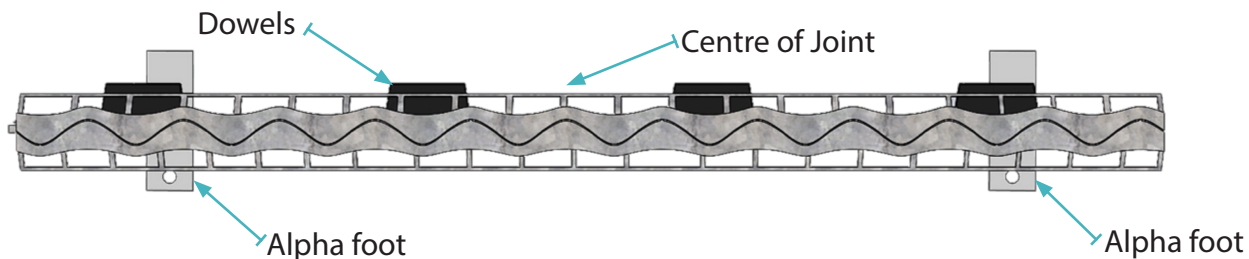


Permaban Wave Installation Guide

Using AlphaFeet Method

Installation Guide Issue V2.0

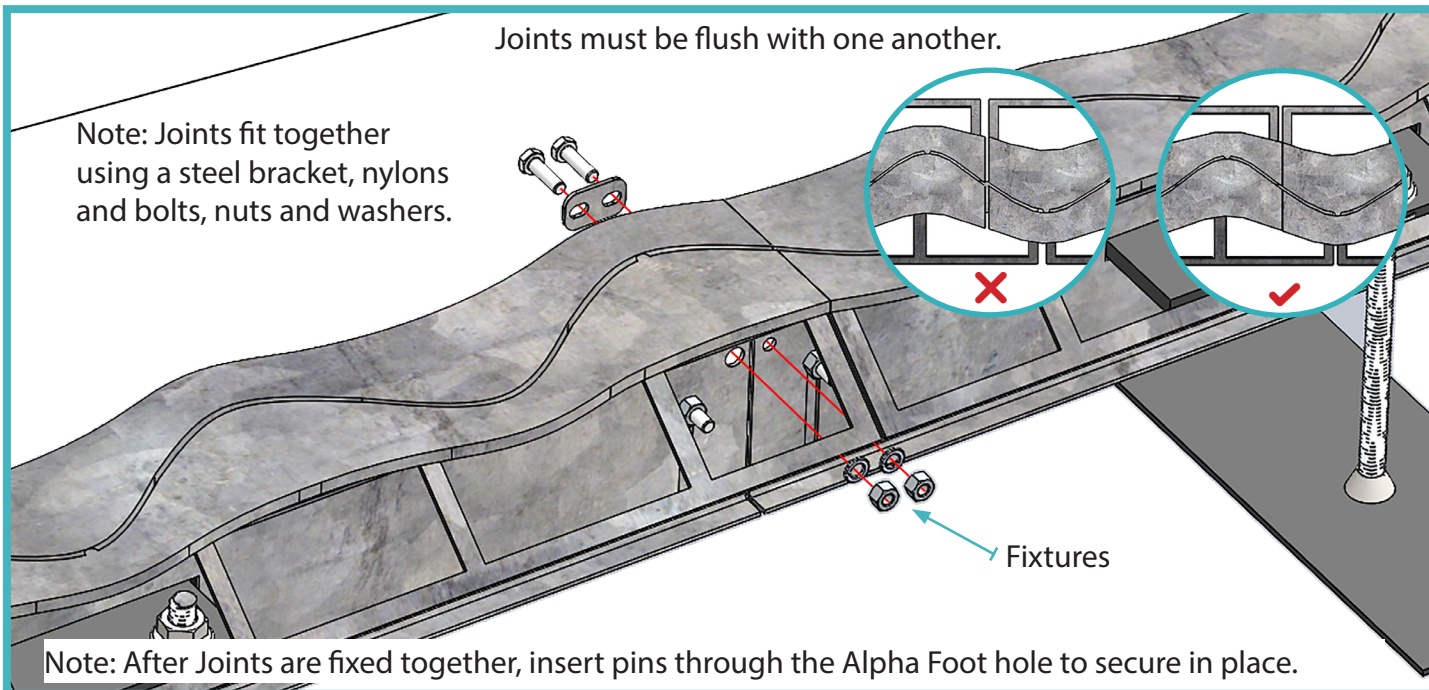
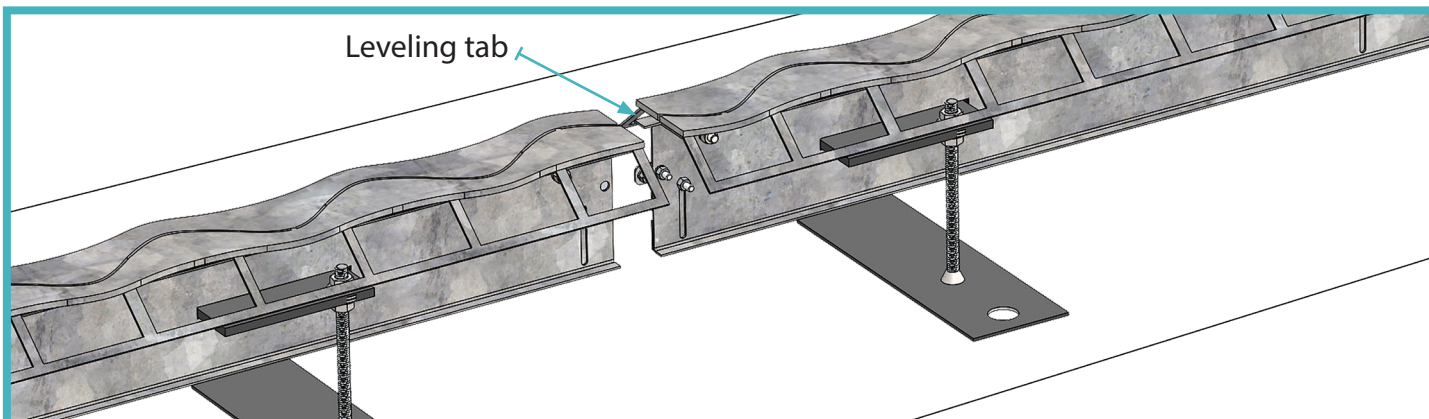
02/09/24



Note: The best foot placement positioned in the first and last dowel.

03 Fix joints together

Position joints end to end and slot the leveling tab into the slot, then use the joining plate to fix the joints together with M6 Nylons and nuts.



Note: After Joints are fixed together, insert pins through the Alpha Foot hole to secure in place.

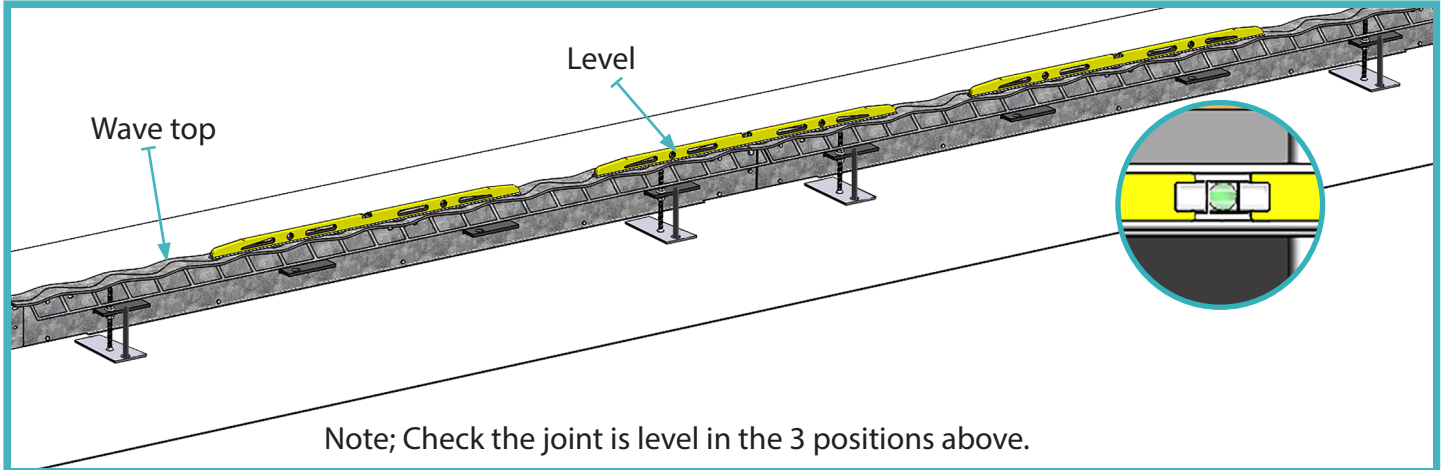
Permaban Wave Installation Guide

Using AlphaFeet Method

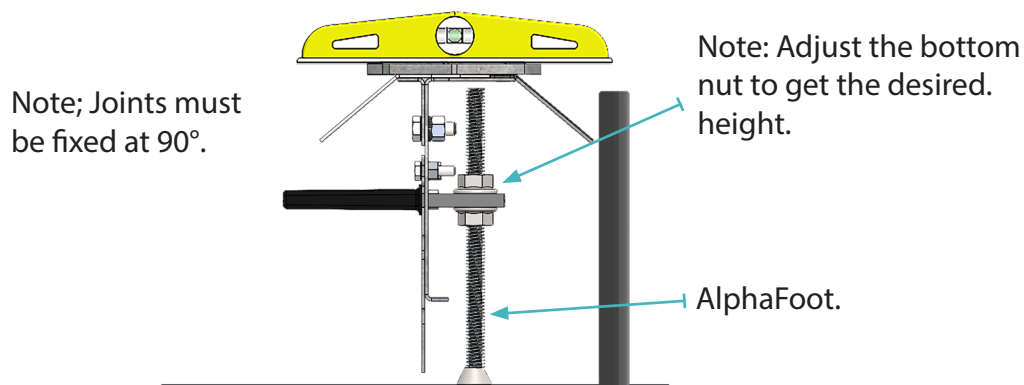
Installation Guide Issue V2.0
02/09/24

04 Adjust to Height

Use the adjustment bolt on the AlphaFoot to achieve desired height and check with a spirit level/optical level.



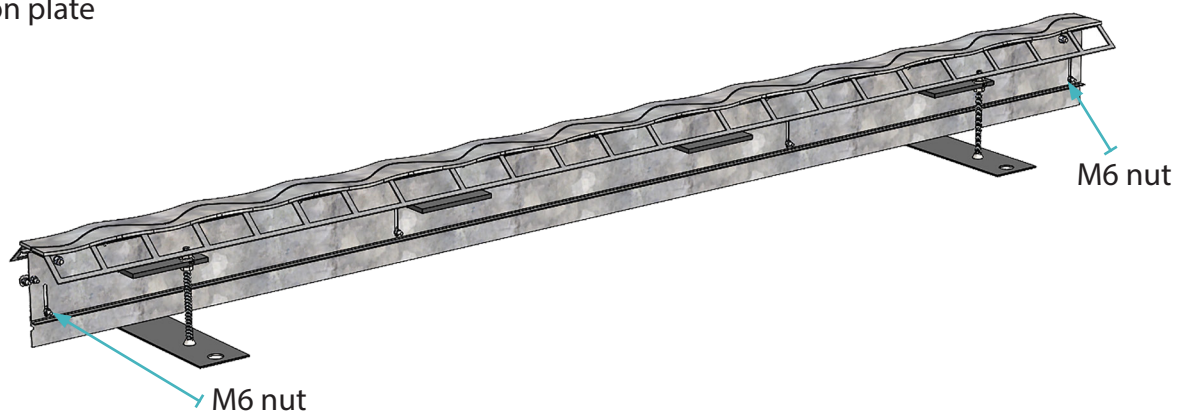
Measure the horizontal level using the top strip.



05 Adjust Wave extension divider plate

Loosen the M6 nuts on the extension plate then tighten to set the joint at a specific height.

Extension plate



Permaban Wave Installation Guide

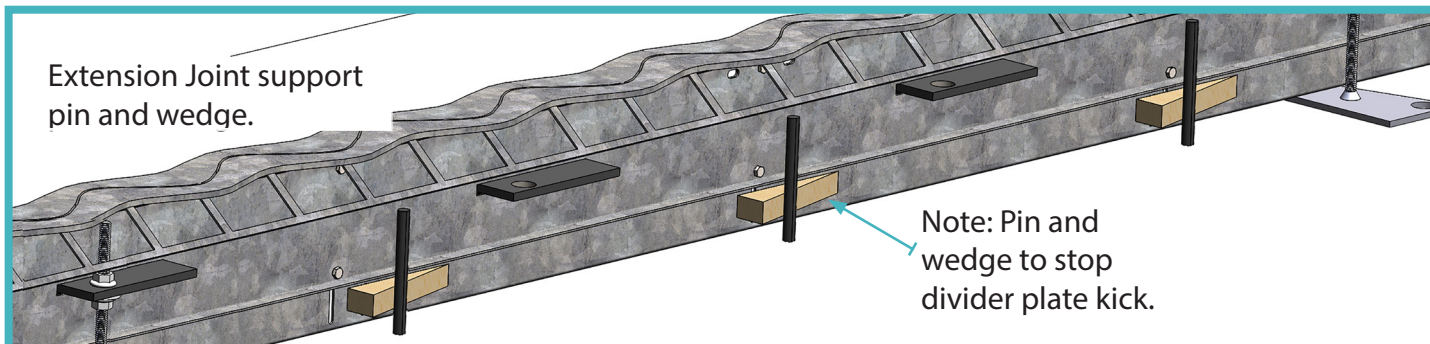
Using AlphaFeet Method

Installation Guide Issue V1.0

14/07/22

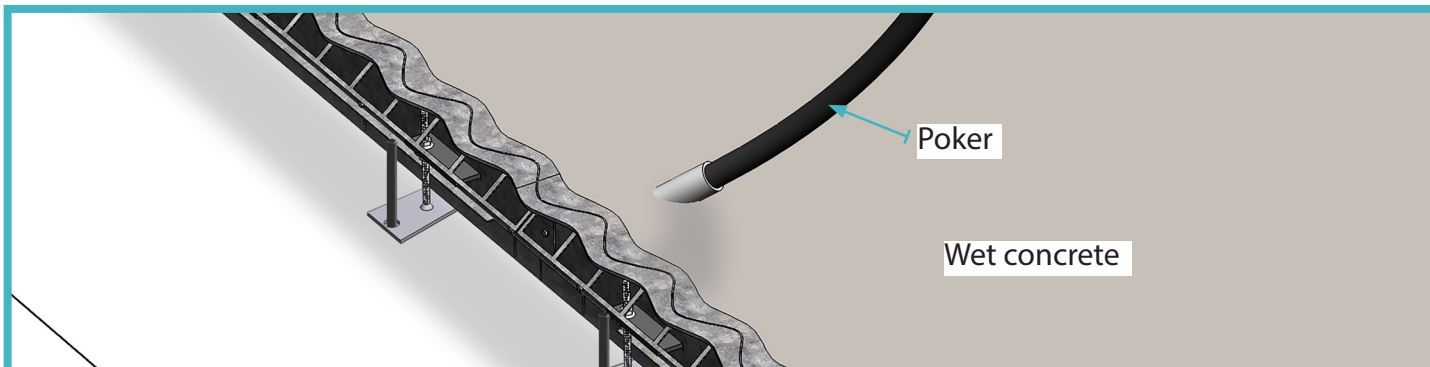
06 Support bars / Wedges

This method used 3 times along the Joint gives good support to the extension plate.



07 Vibrate Concrete

Poker vibrate along length of the joint to compacted concrete.



08 Finish

Finish concrete, flush to top of the Joint ensuring the rail is clearly visible. Remove support pins but the Alpha Feet remain in place.