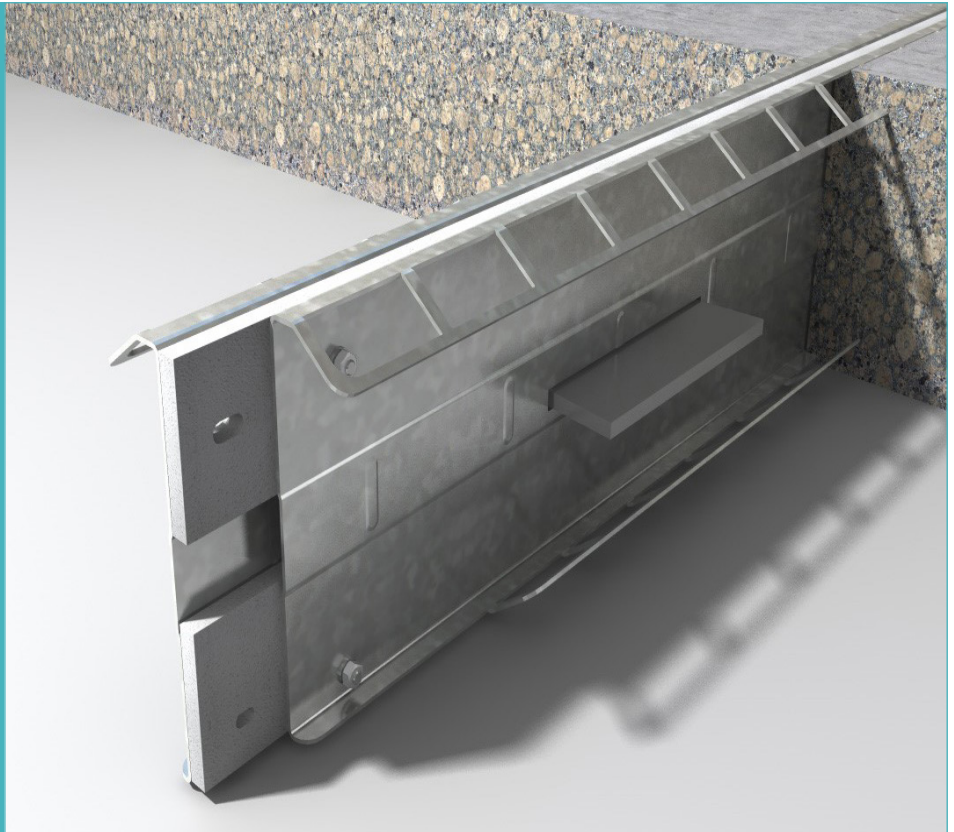


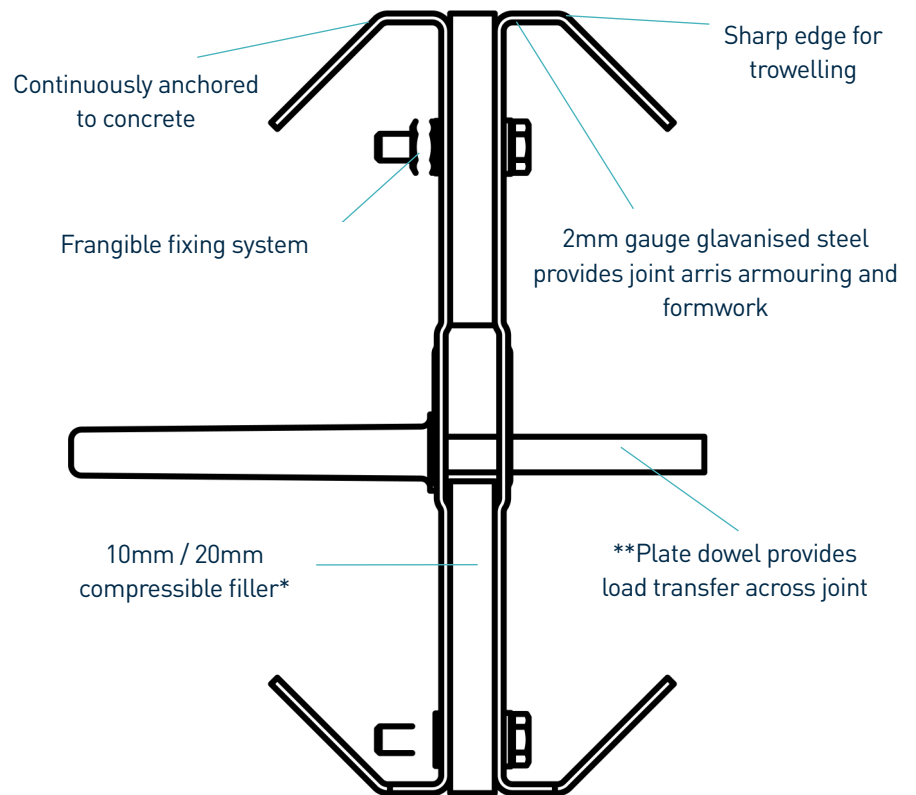
# BetaExpansion®

Specification Sheet  
Issue 5.0  
07/02/2025

BetaExpansion®



BetaExpansion®



\*Other material gauges available  
\*\*Dowels available in thicknesses of 6mm, 8mm and 10mm

# BetaExpansion®

Specification Sheet Issue 5.0  
07/02/2025

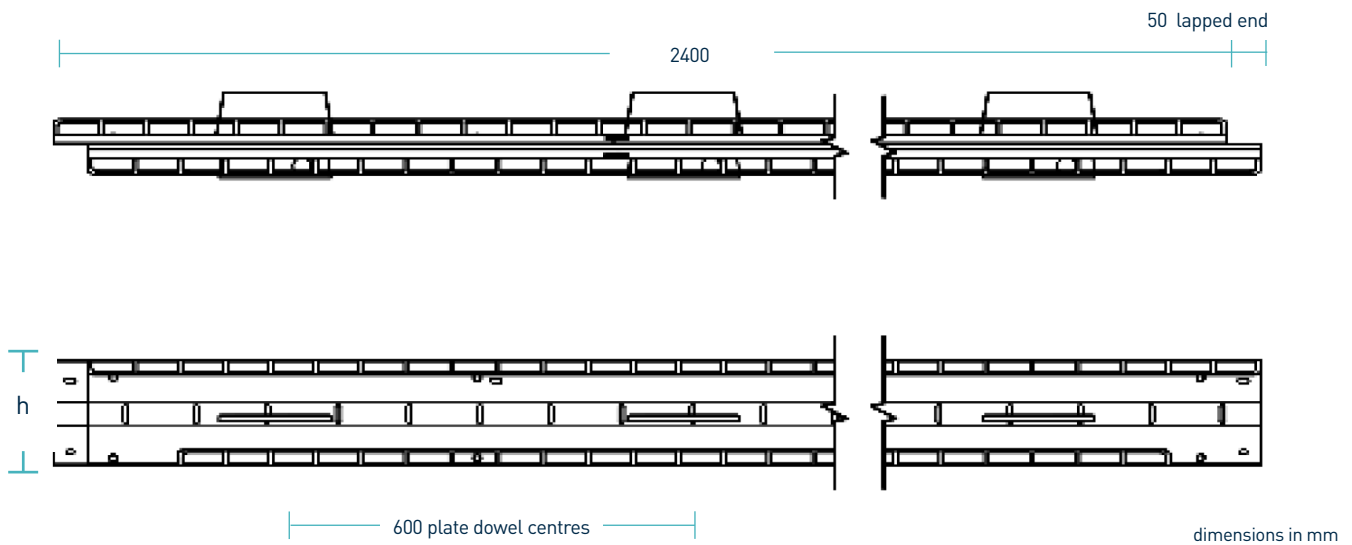
## manufacturing tolerances

Length ±2.0mm

Height ±1mm

Straightness ±0.5mm/600mm

## dimensions of BetaExpansion®



## dimensions and weight of BetaExpansion®

Nominal Slab Depth (mm)	Joint Height, h (mm)	Dowel Size (mm)	Dowel Centres (mm)	Length (mm)	Single Joint Weight (kg)	Number Per Bundle	Bundle Weight (kg)
150	125	151 x 120 x 8	600	2400	15	70	1175
175	150				17	60	1145
200	175				19	48	1037
225	200				21	48	1133
250	225				23	36	953

Typical height and length values shown only. Weight values shown are based on BetaExpansion® including TD8 dowels and are approximate.

## materials

Component	Material
Joint arris armouring	EN 10346:2015 Dx51D+Z
Plate dowel	EN 10025-2:2004 S275JR
Plate dowel sleeve	HDPP
Miothene	Closed Cell Polyethylene Foam

# BetaExpansion®

Specification Sheet Issue 5.0  
07/02/2025

## theoretical calculated ultimate loads at failure of dowel or concrete

(For typical slabs, 40N/mm<sup>2</sup> concrete and 20mm joint opening)

Slab Depth (mm)	Dowel Type	Unreinforced Slab	
		Bursting (kN/m)	Bending (kN/m)
150	TD6	30.2	53.0
	TD8	30.2	86.2
	TD10	30.2	123.0
175	TD6	38.7	53.0
	TD8	38.7	86.2
	TD10	38.7	123.0
200	TD6	48.3	53.0
	TD8	48.3	86.2
	TD10	48.3	123.0
225	TD6	58.8	53.0
	TD8	58.8	86.2
	TD10	58.8	123.0
250	TD6	70.3	53.0
	TD8	70.3	86.2
	TD10	70.3	123.0
275	TD6	82.9	53.0
	TD8	82.9	86.2
	TD10	82.9	123.0
300	TD6	84.2	53.0
	TD8	84.2	86.2
	TD10	84.2	123.0
325	TD6	79.5	53.0
	TD8	79.5	86.2
	TD10	79.5	123.0

# BetaExpansion®

Specification Sheet Issue 5.0  
07/02/2025

## Ultimate load (kN/m)

This table shows the load at failure in bursting (failure of the concrete) and bending (failure of the dowel) for a joint opening of 20mm - larger joint openings can be accommodated. The ultimate load has been calculated in accordance with TR34 4th Edition. Dowel positions taken at mid depth of slab. For more detailed analysis please contact RCR Flooring Products Ltd.

\*All design calculations should be verified by a suitably qualified structural engineer.

compatible dowel systems

