

Permaban BetaJoint/BetaExpansion installation guide

Installation Guide Issue 1.2
01/11/2016

Installation Checklist

- ☒ Joints should be fixed inline
- ☒ Joints must be set level
- ☒ Joints must be fixed upright 90 degrees to finished concrete
- ☒ Joints must be properly braced
- ☒ Only use fixings supplied
- ☒ It is important to clean off concrete excess from top of Joint

BetaJoint/BetaExpansion using AlphaFeet method

Phase 1: Joint Installation



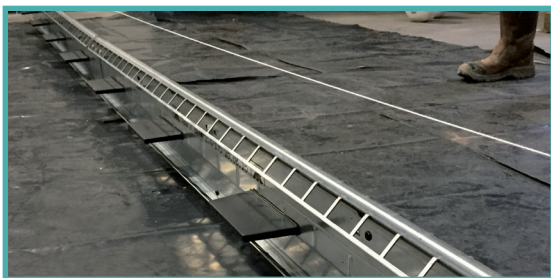
01 Place the joint

Place first length of Permaban joint on the ground in an upright position with the top rail section positioned at the top of the joint.



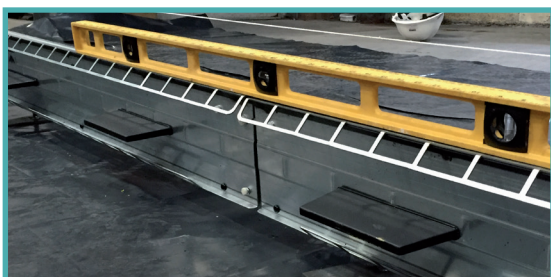
02 Assemble AlphaFeet to the joint

AlphaFeet is used where two joint lengths join together end to end, up through the hole in the dowel.



03 String fixing

Ensure joint is straight and follows the stringline, using AlphaFeet and pins.



04 Adjust joint height

Check the height and that the joint is level, using a spirit level. Adjust as necessary.

Permaban BetaJoint/BetaExpansion installation guide

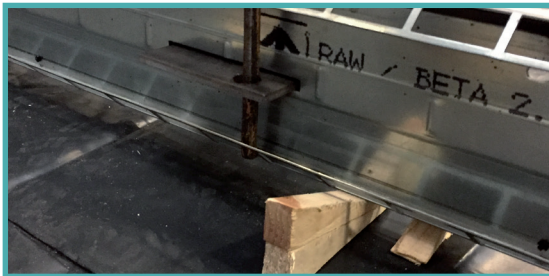
Installation Guide Issue 1.2

01/11/2016



05 Adjust joint level

Joints must be fixed upright 90 degrees to finished concrete.



06 Brace the joint

Use 2 x AlphaFeet per length of each joint length, one at each end.

Where additional bracing is required between AlphaFeet, additional AlphaFeet can be used to support the joint. Alternatively roadform pins and wedges can be used (as shown).

It's important that the joint is braced adequately before concrete works.

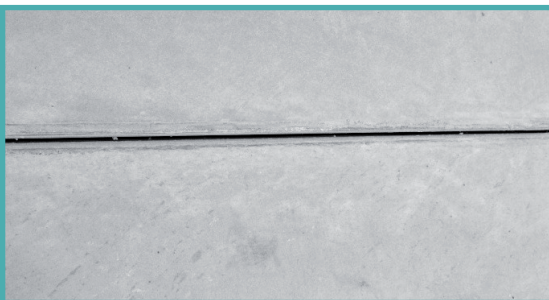
It is best practice to remove or cut the pins before pouring the second side of the slab.

Phase 2: Concrete pour



07 Poker vibrating

Poker vibrate along length of joint to compact concrete.



08 Remove concrete excess

It's important that any concrete excess is removed from the top of the joint during finishing operations, so that the top of the joint is visible when concrete works are complete.