

Permaban BetaJoint/BetaExpansion installation guide

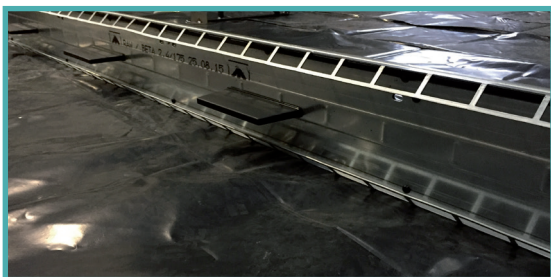
Installation Guide Issue 1.2
01/11/2016

Installation Checklist

- ☒ Joints should be fixed inline
- ☒ Joints must be set level
- ☒ Joints must be fixed upright 90 degrees to finished concrete
- ☒ Joints must be properly braced
- ☒ Only use fixings supplied
- ☒ It is important to clean off concrete excess from top of Joint

BetaJoint/BetaExpansion using Alphafix method

Phase 1: Joint Installation



01 Place the joint

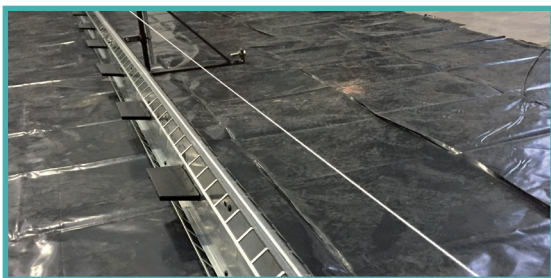
Place first length of Permaban joint on the ground in an upright position.



02 Assemble AlphaFix to the joint

AlphaFix is used where two joint lengths join together end to end.

Ensure AlphaFix kick plate is against the base of the joint by adjusting the wing nut and lock nut as required.



03 String fixing

Ensure joint is straight and follows the stringline, using AlphaFix and pins.



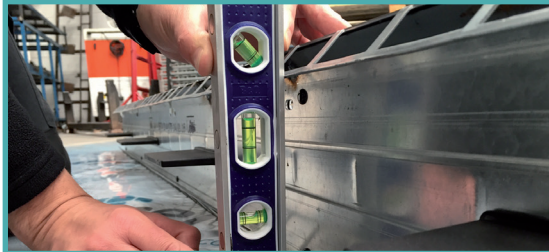
04 Adjust joint height

Check the height and that the joint is level, using a spirit level. Adjust as necessary.

Permaban BetaJoint/BetaExpansion installation guide

Installation Guide Issue 1.2

01/11/2016



05 Adjust joint level

Joints must be fixed upright 90 degrees to finished concrete.



06 Brace the joint

Use 2 x AlphaFix per length of each joint length, one at each end.

Where additional bracing is required between AlphaFix, additional AlphaFix can be used to support the joint. Alternatively roadform pins and wedges can be used (as shown).

It's important that the joint is braced adequately before concrete works.

It is best practice to remove or cut the pins before pouring the second side of the slab.

Phase 2: Concrete pour



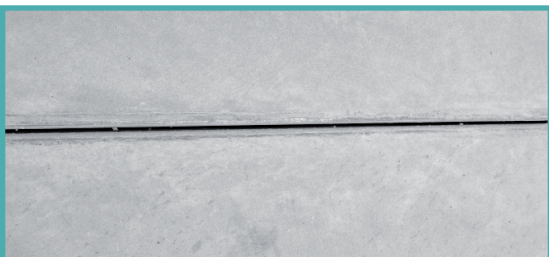
07 Poker vibrating

Poker vibrate along length of joint to compact concrete.



08 Removing the AlphaFix

After the first pour and before the second pour, remove the AlphaFix body from the AlphaFix end block by unscrewing and removing it. Then unscrewing the AlphaFix end block from the joint.



09 Remove concrete excess

It's important that any concrete excess is removed from the top of the joint during finishing operations, so that the top of the joint is visible when concrete works are complete.