

Permaban Eclipse installation guide

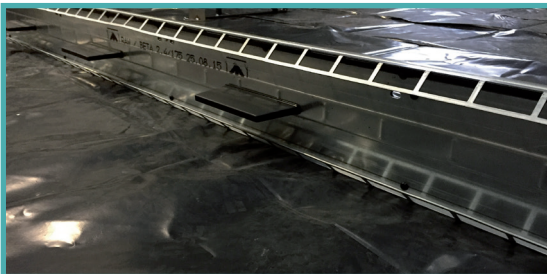
Installation Guide Issue 1.2
01/11/2016

Installation Checklist

- Joints should be fixed inline
- Joints must be set level
- Joints must be fixed upright 90 degrees to finished concrete
- Joints must be properly braced
- Only use fixings supplied
- It is important to clean off concrete excess from top of Joint

Eclipse using Pin & Weld method

Phase 1: Joint Installation



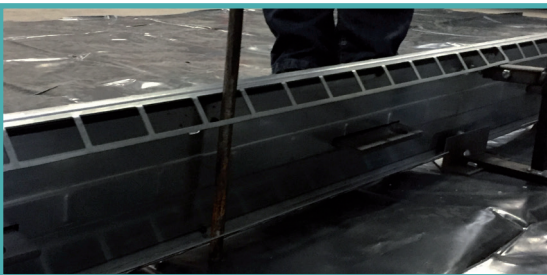
01 Place the joint

Place first length of Permaban joint on the ground in an upright position with the top rail section positioned at the top of the joint.



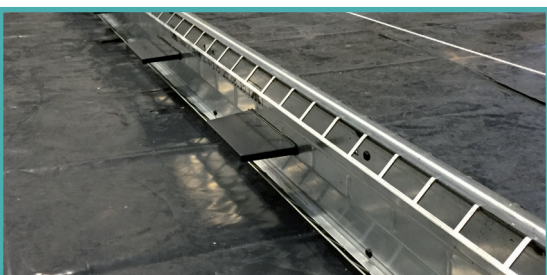
02 Fix joint ends

Fix joints together end to end.



03 Place pins

Place pins along the edge of joint on the side without the sleeves.



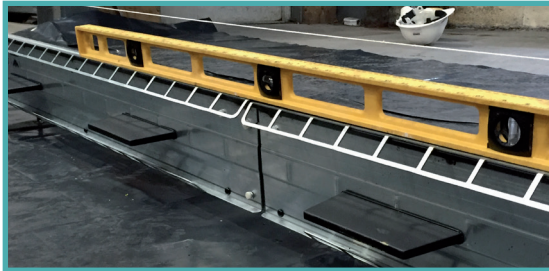
04 String fixing

Ensure joint is straight and follows the stringline, using pins.

Permaban Eclipse installation guide

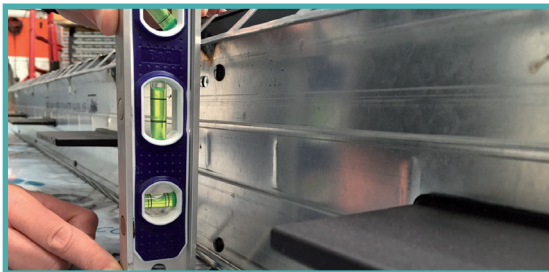
Installation Guide Issue 1.2

01/11/2016



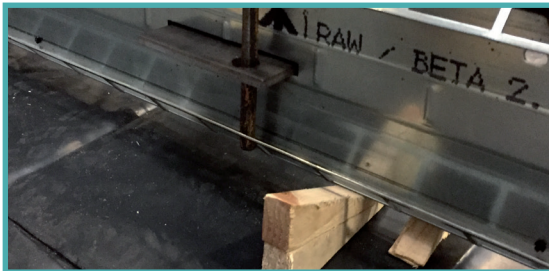
05 Adjust joint height

Check the height and that the joint is level, using a spirit level. Adjust as necessary.



06 Adjust joint level

Joints must be fixed upright 90 degrees to finished concrete.



07 Brace the joint

Brace the joint to secure joint height and level by using roadform pins and wedges (as shown).

It's important that the joint is braced adequately before concrete works.

It is best practice to remove or cut the pins before pouring the second side of the slab.

Phase 2: Concrete pour



08 Poker vibrating

Poker vibrate along length of joint to compact concrete.



09 Remove concrete excess

It's important that any concrete excess is removed from the top of the joint during finishing operations, so that the top of the joint is visible when concrete works are complete.