

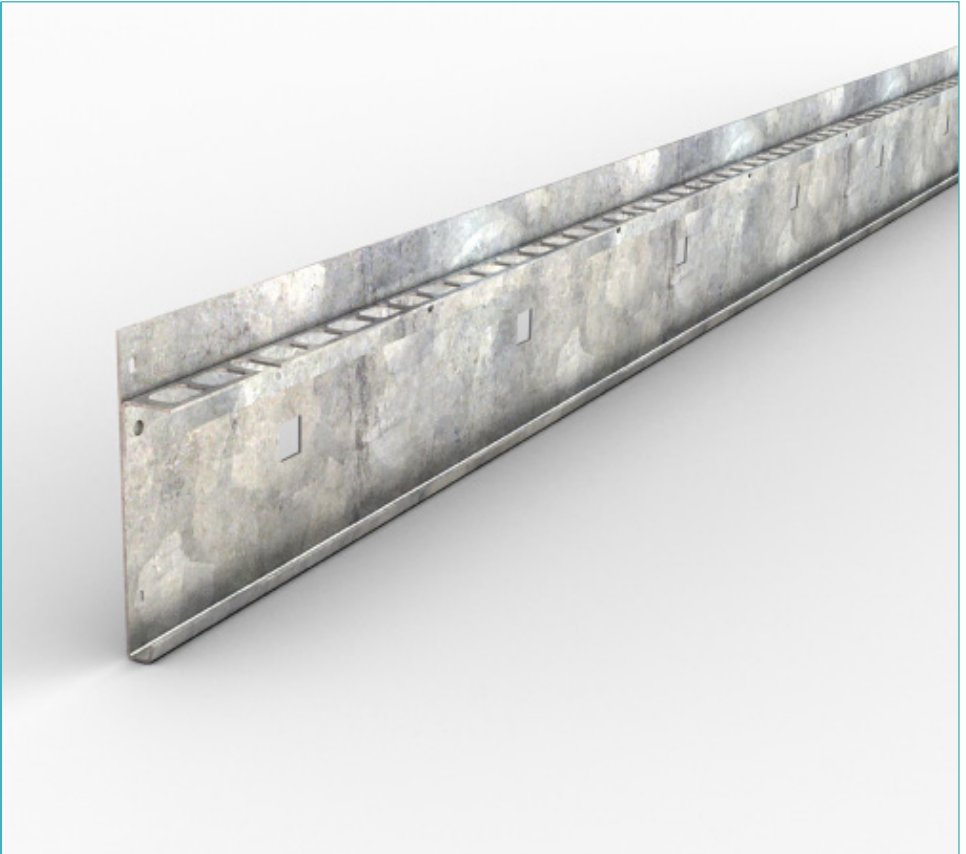
Permasteel Type 3

Specification Sheet

Issue 3.1

12/11/2019

Permasteel Type 3



Technical Information

Permasteel is a flexible 'Leave-in-Place' formwork system for concrete floors and is much easier and quicker to use than traditional concrete screed rail methods.

Permasteel rails are easy to handle and transport as the weight is low and they are delivered in bundles that can be stacked. Cutting the rails with a saw is simple.

Type 3 rails are supplied in 3 metre lengths and are available 70mm - 275mm high for slab depths from 90mm - 295, this can also be used with traditional dowels @ 600mm centres.

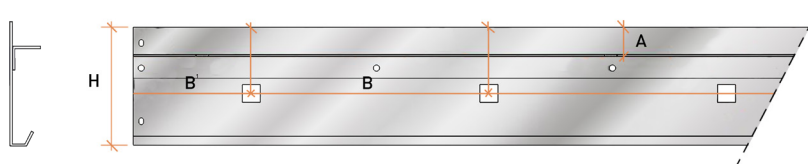
Permasteel Type 3

Specification Sheet Issue 3.1
12/11/2019

Technical Data

Permasteel Type 3 is manufactured from 275g/m² galvanised steel.

Type 3 Permasteel 70mm - 275mm



Permasteel Type 3 is available in an array of depths and traditional dowels.

TYPE	A	B	B1	D	WEIGHT
{3} 70-275	35.0mm	300.0mm	150.0mm	32.0mm	is dependant on height

manufacturing tolerances

Length	±2.0mm	Height	±1mm	Straightness	±0.5mm/600mm
--------	--------	--------	------	--------------	--------------

Permasteel

Specification Sheet Issue 3.1
 12/11/2019

Permasteel - Technical Data

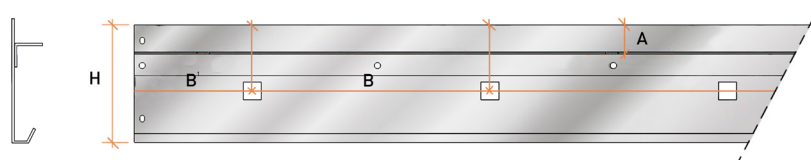
Permasteel - Components

A plastic Void Former is available which attaches to the top edge of any of the four sizes of Permasteel rail. Care should be taken so that the Sealant Void Former is not damaged when using vibratory or rotating concrete levelling and screeding equipment. Permasteel is manufactured using 150g/m² galvanised steel plate, however, Permaban recommend that the Sealant Void Former is used on ALL external applications of Permasteel.

Permasteel Foot 155

Permasteel Foot 115

Type 3 Permasteel 70mm - 275mm



Permasteel Type 3 is available in an array of depths and traditional dowels.

Sealant Void Former

A plastic Void Former is available which attaches to the top edge of any of the four sizes of Permasteel type 2 rail. Care should be taken so that the Sealant Void Former is not damaged when using vibratory or rotating concrete levelling and screeding equipment.

Type 3 rails are available 70mm - 275mm high for slab depths from 90mm - 295mm, this can also be used with traditional dowels @ 600mm centres.

TYPE	A	A1	A2	B	B1	B2	C	C1	D	H	WEIGHT
(1) 155	37.5	64.0mm	91.0mm	100.0mm	50.0mm	100.0mm	24.0mm	-	-	135.0mm	5.68kg
(1) 115	50.0mm	-	-	100.0mm	50.0mm	-	24.0mm	-	-	95.0mm	4.272kg
(2) 70	31.0mm	-	-	150.0mm	75.0mm	-	24.0mm	16.0mm	25.0mm	70.0mm	4.200kg
(2) 40	22.0mm	-	-	150.0mm	75.0mm	-	24.0mm	16.0mm	25.0mm	40.0mm	2.700kg
(3) 70-275	30.0mm	-	-	300.0mm	150.0mm	-	-	-	32.0mm	-	-

Type 2 Permasteel 40mm and 70mm