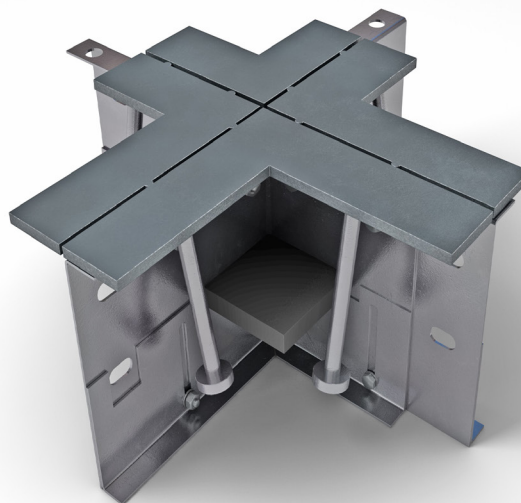


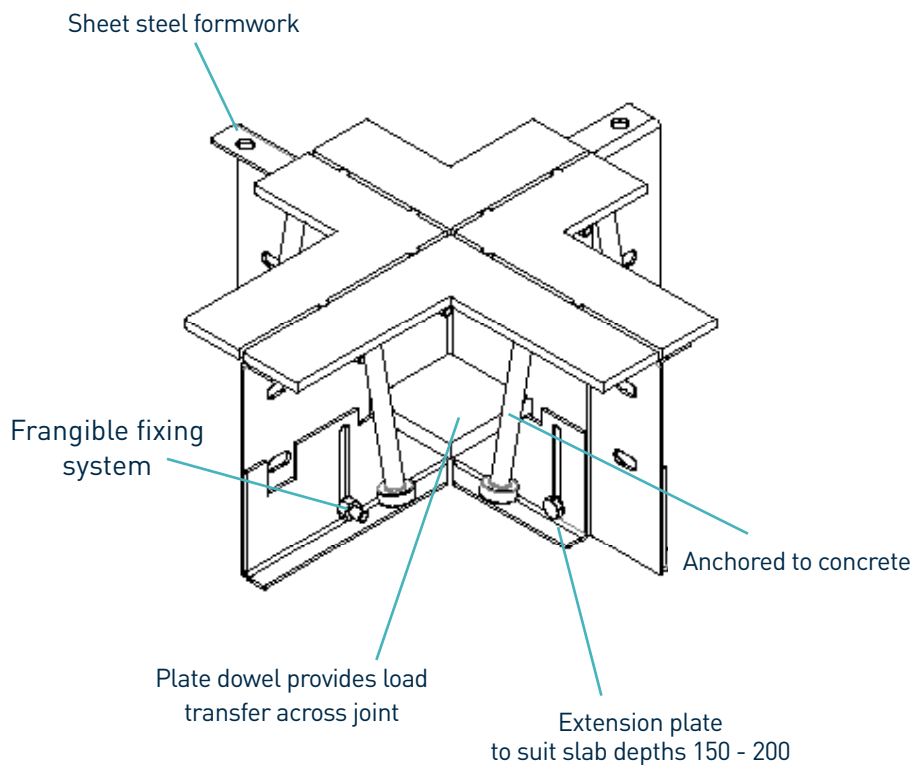
# Permaban Wave® 4-Way

Specification Sheet  
Issue 1.3  
11/02/2021

## Permaban Wave® 4-Way



## Permaban Wave® 4-Way



\* Also available in electroplated and stainless steel

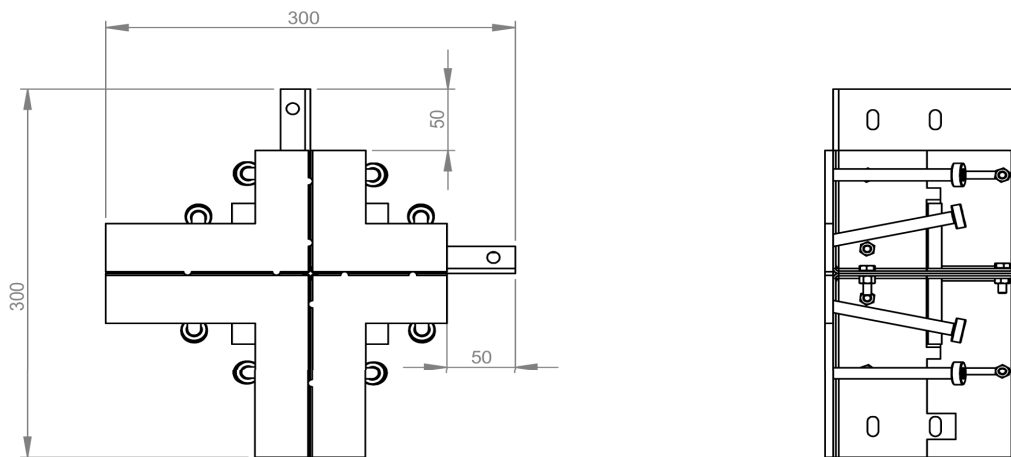
# Permaban Wave® 4-Way

Specification Sheet Issue 1.3  
11/02/2021

## manufacturing tolerances

<b>Length</b>	±2.0mm	<b>Height</b>	±1mm	<b>Straightness</b>	±0.5mm/600mm
---------------	--------	---------------	------	---------------------	--------------

## dimensions of Permaban Wave® 4-Way



## dimensions and weight of Permaban Wave® 4-Way

Accessory	Width (mm)	Length (mm)	Single Weight (kg)	Number Per Bundle	Bundle Weight (kg)
4-Way	350	300	6	84	536

Typical height and length values shown only.

## materials

Component	Material
Non impact steel top provides joint arris	S275JR / BS EN 10088-2 1.4301 304L
Sheet steel formwork	BS EN 1030:2006 DC01
Plate dowel	BS EN 10025-2:2004 S275JRG2
Plate dowel sleeve	HDPP